

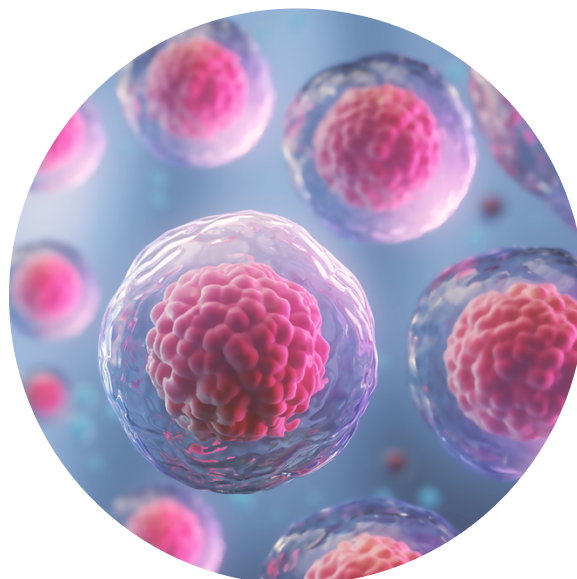
Specifications and  
Instruction Quick Steps

## 2% Alizarin Red Stain

CM-0058

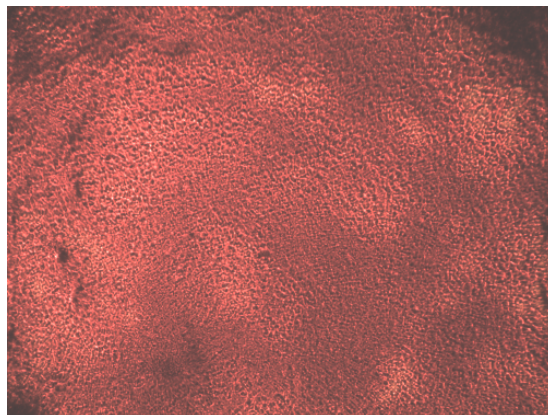


This product is for Research Use Only.  
This product is not approved for human or  
veterinary use or for use in in vitro  
diagnostics or clinical procedures.



**LIFELINE**<sup>®</sup>  
CELL TECHNOLOGY

Better Solutions for  
Breakthrough Results



*Lifeline's adipose-derived mesenchymal stem cells differentiated to osteocytes and stained with Alizarin Red (100X).*

## 2% Alizarin Red Stain

Alizarin Red stains for calcium deposits which are indicative of functional osteocytes and is a useful tool when used with Lifeline's mesenchymal stem cells and Lifeline's OsteoLife™ Complete Osteogenesis Medium.

## Safety Statement

This product is for Research Use Only and is not approved for human or veterinary use, or for use in *in vitro* diagnostics or clinical procedures. Please dispose of reagents in accordance with local and federal regulations.

## The Lifeline Guarantee

Lifeline's rigorous quality control ensures sterility and performance to standardized testing criteria. Upon request, Lifeline will provide lot-specific QC test results, material safety data sheets and certificates of analysis. See complete guarantee/warranty statement at [lifelinecelltech.com](http://lifelinecelltech.com) or contact your Lifeline representative for more information.

Product	Part No.	Volume	Storage
<b>2% Alizarin Red Stain</b>	<a href="#">CM-0058</a>	100 mL	Room temp
Other Recommended Products	Part No.	Unit	Storage
<b>Phosphate Buffered Saline</b>	<a href="#">CM-0001</a>	500 mL	Room temp
<b>Additional Materials Recommended but Not Provided by Lifeline Cell Technology</b>			
<ul style="list-style-type: none"> <li>Absolute Ethanol</li> <li>Deionized Water (dH<sub>2</sub>O)</li> </ul>			



**Call Lifeline Technical Service and Sales at 877.845.7787**

**Or visit [lifelinecelltech.com](http://lifelinecelltech.com) for more information**

Lifeline Cell Technology | 8415 Progress Drive, Suite T | Frederick, MD 21701

©2024 Lifeline Cell Technology, an International Stem Cell Company | All Rights Reserved

### Quick Steps for Fixation and Staining of Osteocytes for Calcium Deposits (Cultured in a 6-Well Plate Format)

1. **Always wash hands before and after working with cell cultures.**
2. **Always wear eye protection and gloves when working with cell cultures.**
3. **When working with cells or medium, always use a certified biological safety cabinet.**
4. Remove medium completely from well(s).
5. Gently, from the side of the well, add 1 mL of Lifeline® PBS (CM-0001) per well.
6. Aspirate PBS.
7. Add 3 mL of absolute ethanol per well and fix for 30 minutes at room temperature.
8. Remove ethanol and allow well(s) to dry completely.
9. Add 1 mL of 2% Alizarin Red Stain Solution (CM-0058) per well and gently tilt side-to-side until solution completely covers well.
10. Incubate for 15 minutes at room temperature.
11. Remove Alizarin Red from the well(s).
12. Using care, rinse well(s) three times with 1 mL dH<sub>2</sub>O and allow to dry.
13. Take extreme care when rinsing well(s) or calcium crystals may be dislodged and rinsed away.
14. Staining is complete.

**For any question on cell staining, please contact technical service at 877.845.7787. We are here to help.**

Other Recommended Products	Part No.	Unit	Components	Storage
Human Mesenchymal Stem Cells-Wharton's Jelly (HMSC-WJ)	<a href="#">FC-0020</a>	0.5 x 10 <sup>6</sup> Cells		-150°C
Human Mesenchymal Stem Cells-Adipose (HMSC-Ad)	<a href="#">FC-0034</a>	10 <sup>6</sup> Cells		-150°C
StemLife™ MSC Medium Complete Kit	<a href="#">LL-0034</a>	Kit	StemLife Basal Medium StemLife MSC LifeFactors® Kit	2-8°C when prepared
Human Mesenchymal Stem Cells-Bone Marrow (HMSC-BM)	<a href="#">FC-0057</a>	10 <sup>6</sup> Cells		-150°C
StemLife MSC-BM Medium Complete Kit	<a href="#">LL-0062</a>	Kit	StemLife Basal Medium StemLife MSC-BM LifeFactors Kit	2-8°C when prepared
Human Pre-Adipocytes, Adult (HMSC-Pre-Adipocyte)	<a href="#">FC-0062</a>	10 <sup>6</sup> Cells		-150°C



**Call Lifeline Technical Service and Sales at 877.845.7787**

**Or visit [lifelinecelltech.com](http://lifelinecelltech.com) for more information**

Lifeline Cell Technology | 8415 Progress Drive, Suite T | Frederick, MD 21701

©2024 Lifeline Cell Technology, an International Stem Cell Company | All Rights Reserved

FibroLife® S2 Medium Complete Kit	<a href="#">LL-0011</a>	Kit	FibroLife Basal Medium FibroLife S2 LifeFactors Kit	2-8°C when prepared
OsteoLife™ Complete Osteogenesis Medium	<a href="#">LM-0023</a>	100 mL		-20°C
TrypKit™	<a href="#">LL-0013</a>	Kit	PBS 0.05% Trypsin/0.02% EDTA Trypsin Neutralizing Solution	RT -20°C -20°C
<b>Optional Supplements</b>	<b>Part No.</b>	<b>Volume</b>	<b>Concentrations of Supplement</b>	<b>Storage</b>
Phenol Red Supplement	<a href="#">LS-1009</a>	1 mL	33 mM	RT
Antimicrobial Supplement: Gentamicin and Amphotericin B (Provided with purchase of LL-0011, LL-0034, or LL-0062)	<a href="#">LS-1104</a>	0.5 mL	Gentamicin 30 mg/mL Amphotericin B 15 µg/mL	-20°C



Call Lifeline Technical Service and Sales at **877.845.7787**

Or visit **lifelinecelltech.com** for more information

Lifeline Cell Technology | 8415 Progress Drive, Suite T | Frederick, MD 21701

©2024 Lifeline Cell Technology, an International Stem Cell Company | All Rights Reserved