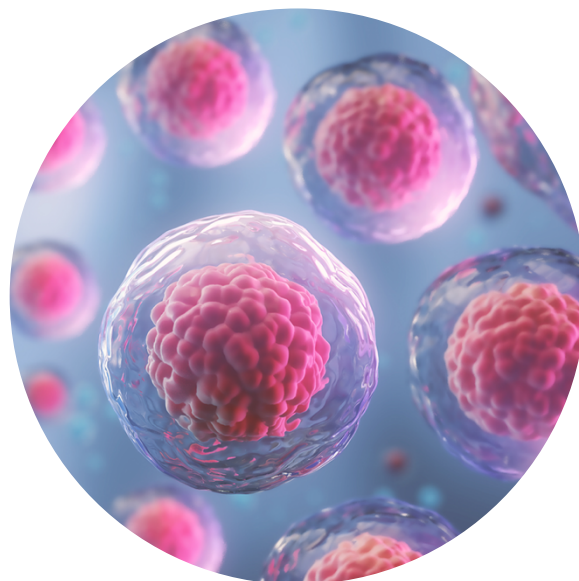


# Normal Human Fallopian Tube Epithelial Cells (HFTEC)

FC-0081

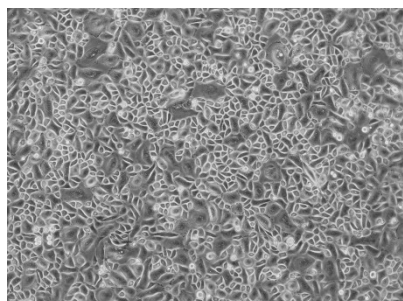


This product is for Research Use Only.  
This product is not approved for human or  
veterinary use or for use in in vitro  
diagnostics or clinical procedures.

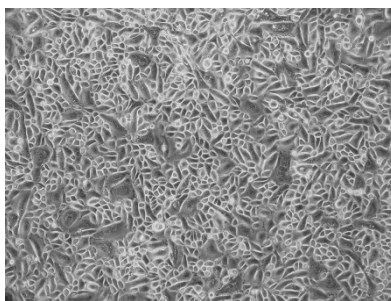


**LIFELINE**<sup>®</sup>  
CELL TECHNOLOGY

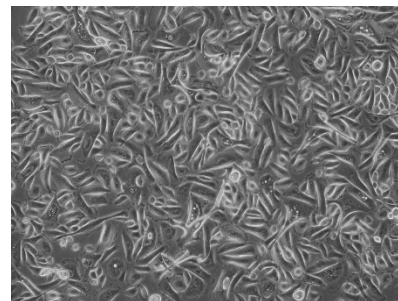
Better Solutions for  
Breakthrough Results



*HFTEC, passage 4, 5 days after inoculation with 5,000 cells/cm<sup>2</sup> (100X).*



*HFTEC, passage 5, 6 days after inoculation with 5,000 cells/cm<sup>2</sup> (100X).*



*HFTEC, passage 6, 7 days after inoculation with 5,000 cells/cm<sup>2</sup> (100X).*

CELL FEATURES:	ISOLATED FROM:	CRYOPRESERVED AT THE END OF:
<ul style="list-style-type: none"> <li>HFTEC</li> </ul>	<ul style="list-style-type: none"> <li>Fallopian Tubes (full length)</li> </ul>	<ul style="list-style-type: none"> <li>Tertiary Culture*</li> </ul>
<ul style="list-style-type: none"> <li>HFTEC provide an ideal model for the study of female reproductive tract cancer development, the cellular response to infectious agents, among other areas of research.</li> </ul>		
<ul style="list-style-type: none"> <li>HFTEC are extensively tested for quality and optimal performance.</li> </ul>		
<ul style="list-style-type: none"> <li>HFTEC have been characterized by FACS as dominantly positive for Cytokeratin-8/18.</li> </ul>		
<ul style="list-style-type: none"> <li>HFTEC's normal morphology has been characterized as mixed cuboidal and elongated, clonal.</li> </ul>		
<ul style="list-style-type: none"> <li>Lifeline guarantees performance and quality.</li> </ul>		

HUMAN FALLOPIAN TUBE EPITHELIAL CELLS ARE TESTED FOR:	
Cell Count	500,000 cryopreserved cells per vial
Proliferation and Morphology	Normal morphology for 5 population doublings
Cell Viability	Minimum 70% viability when thawed from cryopreservation
Sterility Testing	Negative for mycoplasma Negative for bacterial and fungal growth
Virus Testing	Negative for HIV-1, HIV-2, HBV, and HCV by PCR



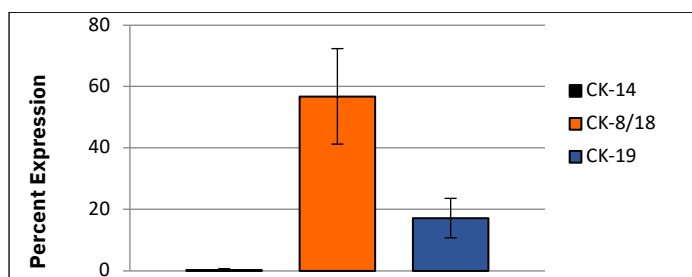
**Call Lifeline Technical Service and Sales at 877.845.7787**

**Or visit [lifelinecelltech.com](http://lifelinecelltech.com) for more information**

Lifeline Cell Technology | 8415 Progress Drive, Suite T | Frederick, MD 21701

©2024 Lifeline Cell Technology, an International Stem Cell Company | All Rights Reserved

PART NUMBER	DESCRIPTION
<a href="#">FC-0081</a>	Normal Human Fallopian Tube Epithelial Cells, Tertiary – 500,000 cells per vial
<a href="#">LL-0072</a>	ReproLife™ CX Medium Complete Kit (ReproLife CX Basal Medium, ReproLife LifeFactors™ Kit)
<a href="#">LS-1104</a>	GA Antimicrobial Supplement, 0.5 mL (Gentamicin 30 mg/mL, Amphotericin B 15 µg/mL); provided with purchase of LL-0072



#### **Average Cytokeratin Expression for HFTEC.**

*HFTEC have been characterized by FACS as dominantly positive for Cytokeratin-8/18.*

### **Lifeline's Normal Human Fallopian Tube Epithelial Cells**

Lifeline's Normal Human Fallopian Tube Epithelial Cells, when grown in Lifeline's ReproLife™ Medium, provide an ideal serum-free culture model for many areas of research. These cells may be used to study cellular physiology of the reproductive tract, the cellular response to infectious agents, and other areas of research.

Lifeline's HFTEC are cryopreserved as tertiary\* cells to ensure the highest viability and plating efficiency. Our HFTEC are quality tested in ReproLife Medium to ensure optimal morphology and growth over a period of at least 5 population doublings.

Lifeline's HFTEC are not exposed to antimicrobials or phenol red when cultured in Lifeline's ReproLife Medium. Lifeline® offers antimicrobials and phenol red; however they are not required for eukaryotic cell proliferation. A vial of Gentamicin and Amphotericin B (GA; LS-1104) is provided with the purchase of ReproLife CX Medium Complete Kit (LL-0072) for your convenience. The use of GA is recommended to inhibit potential fungal or bacterial contamination of eukaryotic cell cultures. Phenol Red (LS-1009) may be purchased, but is not required.

### **Quality Testing for Guaranteed Consistency and Reproducible Results**

Lifeline Cell Technology manufactures products using the highest quality raw materials and incorporates extensive quality assurance in every production run. Exacting standards and production procedures ensure consistent performance.



**Call Lifeline Technical Service and Sales at 877.845.7787**

**Or visit [lifelinecelltech.com](http://lifelinecelltech.com) for more information**

Lifeline Cell Technology | 8415 Progress Drive, Suite T | Frederick, MD 21701

©2024 Lifeline Cell Technology, an International Stem Cell Company | All Rights Reserved

### The Lifeline Guarantee

Lifeline's rigorous quality control ensures sterility and performance to standardized testing criteria. Upon request, Lifeline will provide lot specific QC test results, material safety data sheets, and certificates of analysis. See complete guarantee/warranty statement at [lifelinecelltech.com](https://lifelinecelltech.com) or contact your Lifeline representative for more information.

All donated tissues have been obtained under proper informed consent and adhere to the Declaration of Helsinki, The Human Tissue Act (UK), CFR Title 21, and HIPAA Regulations related to obtaining and handling human tissue for Research Use.

### Safety Statement

Lifeline recommends storing cryopreserved vials in liquid nitrogen vapor phase. Handle cryopreserved vials with caution. Always wear eye protection and gloves when working with cell cultures. Aseptically vent any liquid nitrogen from cryopreserved vials by carefully loosening the vial cap in a biosafety cabinet prior to thawing the vials in a water bath. If vials must be stored in liquid phase, the vials should be transferred to vapor phase storage or -80°C for up to 24 hours prior to being thawed.

*\*Lifeline Technical Note: There are different and often contradictory terminologies used by cell culture companies to define the passage number of cells. Lifeline's designation of 'primary cells' are cells that have been isolated from tissue, plated onto culture vessels, expanded, harvested and cryopreserved. The term 'tertiary' indicates that the cells have been isolated, plated and expanded in culture vessels three times before being harvested for cryopreservation.*



Call Lifeline Technical Service and Sales at **877.845.7787**

Or visit **[lifelinecelltech.com](https://lifelinecelltech.com)** for more information

Lifeline Cell Technology | 8415 Progress Drive, Suite T | Frederick, MD 21701

©2024 Lifeline Cell Technology, an International Stem Cell Company | All Rights Reserved