

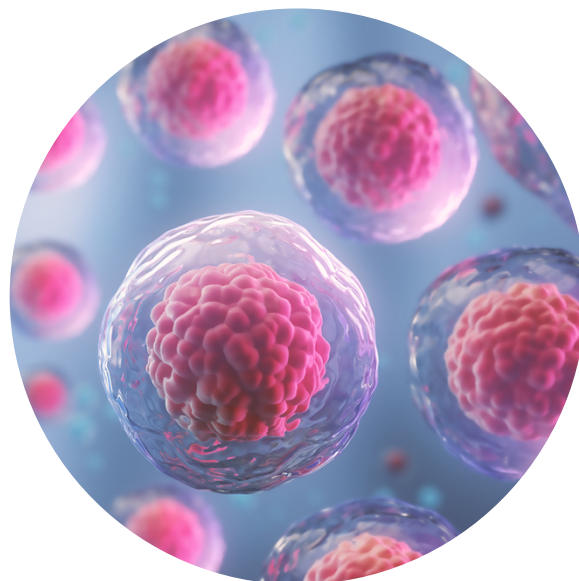
Normal Human Male Reproductive Epithelial Cells

FC-0038

FC-0048

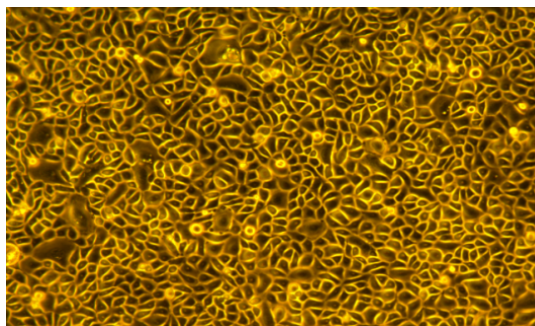


This product is for Research Use Only.
This product is not approved for human or
veterinary use or for use in in vitro
diagnostics or clinical procedures.



LIFELINE[®]
CELL TECHNOLOGY

Better Solutions for
Breakthrough Results



HPrEC, passage 3,
5 days after inoculation
with 2,500 cells/cm² (100X)

CELL FEATURES:

- HPrEC are cryopreserved as secondary cells*.
- HSVEC are cryopreserved as secondary cells*.
- HPrEC provide an ideal model for the study of prostate related cell biology; such as hormonal regulation, secretory regulation and control, and as a control for the study of prostate cancer.
- HPrEC and HSVEC are not exposed to retinoic when cultured in ProstaLife medium.
- HPrEC and HSVEC are extensively tested for quality and optimal performance.
- Lifeline guarantees performance and quality.

NORMAL HUMAN MALE REPRODUCTIVE EPITHELIAL CELLS ARE TESTED FOR:

• Cell Count	500,000 cryopreserved cells per vial
• Proliferation and Morphology	Normal cell appearance for 15 population doublings
• Cell Viability	Minimum 70% viability when thawed from cryopreservation
• Sterility Testing	Negative for mycoplasma Negative for bacterial and fungal growth for 14 days
• Virus Testing	Negative for HIV-1, HIV-2, HBV, and HCV by PCR

PART NUMBER	DESCRIPTION
FC-0038	HPrEC, Normal Human Prostate Epithelial Cells, Secondary – 500,000 cells per vial
FC-0048	HSVEC, Normal Human Seminal Vesicle Epithelial Cells, Secondary – 500,000 cells per vial
LL-0041	ProstaLife™ Medium Complete Kit (ProstaLife Basal Medium, ProstaLife LifeFactors™ Kit)
LS-1104	GA Antimicrobial Supplement, 0.5 mL (Gentamicin 30 mg/mL, Amphotericin B 15 µg/mL); provided with purchase of LL-0041

**Lifeline Technical Note: There are different and often contradictory terminologies used by cell culture companies to define the passage number of cells. Lifeline's designation of 'primary cells' are cells that have been isolated from tissue, plated onto culture vessels, expanded, harvested and frozen. The term 'secondary' indicates that the cells have been isolated, plated and expanded in culture vessels twice before being harvested for cryopreservation.*



Call Lifeline Technical Service and Sales at **877.845.7787**

Or visit **lifelinecelltech.com** for more information

Lifeline Cell Technology | 8415 Progress Drive, Suite T | Frederick, MD 21701

©2024 Lifeline Cell Technology, an International Stem Cell Company | All Rights Reserved

Lifeline's Normal Human Male Reproductive Epithelial Cells

Lifeline's Normal Human Male Reproductive Epithelial Cells, when grown in Lifeline's ProstaLife™ Medium, provides an ideal serum-free culture model, without retinoic acid, for the study of prostate and seminal vesicle epithelial cells. Common uses for HPrEC are studies of hormonal regulation of the prostate, regulation and control of the secretory function of prostate cells and as a control for the study of prostate cancer.

Lifeline's HPrEC and HSVEC are cryopreserved as secondary cells* to ensure the highest viability and plating efficiency. Our HPrEC and HSVEC are quality tested in ProstaLife Medium to ensure optimal serum-free growth over a period of at least 15 population doublings at rates equal to or greater than serum-supplemented media.

Lifeline's HPrEC and HSVEC are not exposed to antimicrobials or phenol red when cultured in Lifeline's ProstaLife Medium. Lifeline® offers antimicrobials and phenol red; however they are not required for eukaryotic cell proliferation. A vial of Gentamicin and Amphotericin B (GA; LS-1104) is provided with the purchase of ProstaLife Medium Complete Kit (LL-0041) for your convenience. The use of GA is recommended to inhibit potential fungal or bacterial contamination of eukaryotic cell cultures. Phenol Red (LS-1009) may be purchased, but is not required.

Quality Testing for Guaranteed Consistency and Reproducible Results

Lifeline Cell Technology manufactures products using the highest quality raw materials and incorporates extensive quality assurance in every production run. Exacting standards and production procedures ensure consistent performance.

The Lifeline Guarantee

Lifeline's rigorous quality control ensures sterility and performance to standardized testing criteria. Upon request, Lifeline will provide lot specific QC test results, material safety data sheets, and certificates of analysis. See complete guarantee/warranty statement at lifelinecelltech.com or contact your Lifeline representative for more information.

All donated tissues have been obtained under proper informed consent and adheres to the Declaration of Helsinki, The Human Tissue Act (UK), CFR Title 21, and HIPAA Regulations relative to obtaining and handling human tissue for Research Use.

Safety Statement

Lifeline recommends storing cryopreserved vials in liquid nitrogen vapor phase. Handle cryopreserved vials with caution. Always wear eye protection and gloves when working with cell cultures. Aseptically vent any liquid nitrogen from cryopreserved vials by carefully loosening the vial cap in a biosafety cabinet prior to thawing the vials in a water bath. If vials must be stored in liquid phase, the vials should be transferred to vapor phase storage or -80°C for up to 24 hours prior to being thawed.



Call Lifeline Technical Service and Sales at **877.845.7787**

Or visit **lifelinecelltech.com** for more information

Lifeline Cell Technology | 8415 Progress Drive, Suite T | Frederick, MD 21701

©2024 Lifeline Cell Technology, an International Stem Cell Company | All Rights Reserved