

BronchiaLife™ Cell Culture Medium

LL-0023
LM-0007
LS-1047



This product is for Research Use Only.
This product is not approved for human or
veterinary use or for use in in vitro
diagnostics or clinical procedures.



LIFELINE
CELL TECHNOLOGY

Better Solutions for
Breakthrough Results

BronchiaLife Cell Culture Medium

BronchiaLife is optimized for the serum-free culture of Human Bronchial/Tracheal Epithelial, Small Airway Epithelial, Lobar Bronchial Epithelial, Laryngeal Epithelial, Bronchial/Tracheal Epithelial-CF, and Small Airway Epithelial-A+COPD cells. BronchiaLife supports the growth of these cells over a period of at least 15 population doublings.

BronchiaLife Basal Medium contains no antimicrobials and no phenol red. Lifeline offers antimicrobials and phenol red; however, they are not required for eukaryotic cell proliferation.

BronchiaLife Culture Medium Components

BronchiaLife is offered in a kit format composed of basal medium and associated supplements and growth factors called “LifeFactors™.” This kit allows you to prepare fresh medium in your laboratory, extending shelf life and enhancing performance. BronchiaLife Basal Medium is provided in a light-protected 500 mL bottle. The remaining LifeFactors (growth factors and supplements) are packaged in a convenient gas-impermeable pouch for easy storage.

Product	Part No.	Volume	Final Concentrations in Supplemented Medium	Storage
BronchiaLife Medium Complete Kit, (BronchiaLife Basal Medium, BronchiaLife LifeFactors Kit)	LL-0023			2-8°C when prepared
BronchiaLife Basal Medium	LM-0007	485 mL		2-8°C
BronchiaLife LifeFactors Kit	LS-1047			-20°C
HLL Supplement LifeFactor	LS-1001	1.25 mL	HSA-500 µg/mL Linoleic Acid-0.6 µM Lecithin-0.6 µg/mL	-20°C
L-Glutamine LifeFactor	LS-1031	15 mL	6 mM	-20°C
Extract P™ LifeFactor	LS-1037	2 mL	0.4%	-20°C
TM1 LifeFactor	LS-1055	5 mL	Epinephrine – 1 µM Transferrin PS – 5 µg/mL T3 – 10 nM Hydrocortisone – 0.1 µg/mL rh EGF – 5 ng/mL rh Insulin – 5 µg/mL	-20°C
Antimicrobial Supplement: Gentamicin and Amphotericin B (Provided with purchase of LL-0023)	LS-1104	0.5 mL	Gentamicin 30 µg/mL Amphotericin B 15 ng/mL	-20°C
Optional Supplements	Part No.	Volume	Concentrations of Supplement	Storage
Phenol Red Supplement	LS-1009	1 mL	33 mM	RT



Call Lifeline Technical Service and Sales at **877.845.7787**

Or visit lifelinecelltech.com for more information

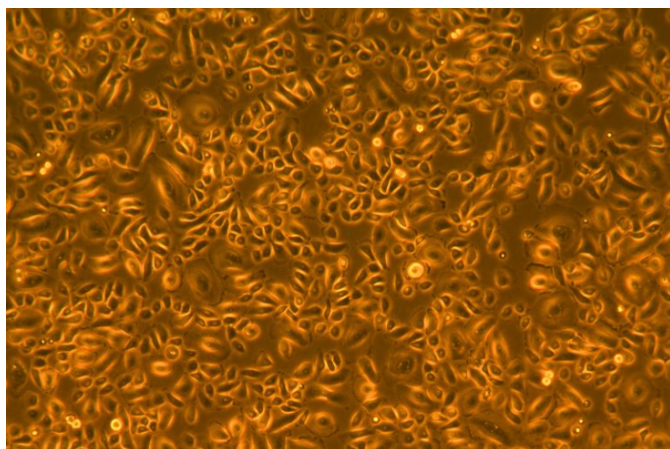
Lifeline Cell Technology | 8415 Progress Drive, Suite T | Frederick, MD 21701

©2024 Lifeline Cell Technology, an International Stem Cell Company | All Rights Reserved

Quality Testing for Guaranteed Consistency and Reproducible Results

Lifeline Cell Technology manufactures products using the highest quality raw materials and incorporates ISO style quality assurance in every production run. Exacting standards and production procedures ensure lot-to-lot consistency. Every production lot of BronchiaLife Medium is extensively tested using human airway epithelial cells. BronchiaLife Medium and Gentamicin-Amphotericin B ([LS-1104](#)) are cell culture tested separately.

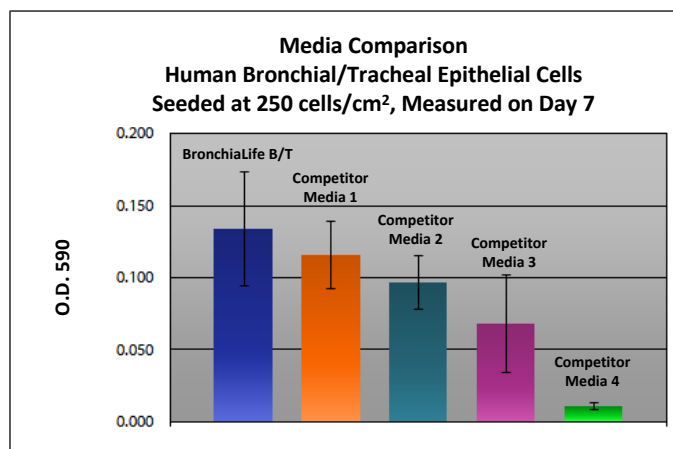
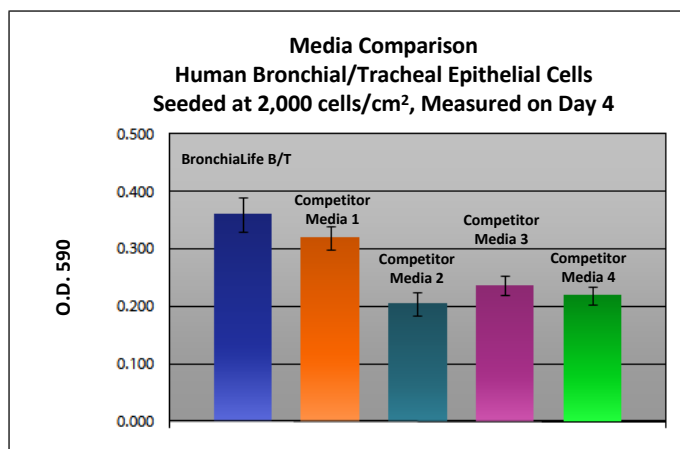
- | | | | |
|---------------------|--|--------------|-----------------|
| • Sterility Testing | Negative for bacterial and fungal growth | • Osmolality | 315 +/- 10 mOsm |
| • pH | 7.5 +/- 0.2 | • Endotoxin | < 0.5 EU/mL |
| • Cell Testing | Rate of proliferation and morphology | | |



BronchiaLife™ Medium grows Human Bronchial/Tracheal Epithelial, Small Airway Epithelial, Lobar Bronchial Epithelial, Laryngeal Epithelial, Bronchial/Tracheal Epithelial-CF, and Small Airway Epithelial-A+COPD cells through at least 15 population doublings at rates that meet or exceed other commercially available media while maintaining excellent cell morphology. In comparisons with other commercially available media, BronchiaLife shows superior proliferation at different seeding densities.

Shown left: Human Bronchial/Tracheal Epithelial Cells, passage 3, 4 days after inoculation with 5,000 cells/cm² (100X).

Shown below: Proliferation at low seeding density in 24-well plates. Higher O.D. 590 represents a greater number of cells per well and therefore better proliferation.



The Lifeline® Guarantee

Lifeline's rigorous quality control ensures sterility and performance to standardized testing criteria. Upon request, Lifeline will provide lot-specific QC test results, material safety data sheets and certificates of analysis. See complete guarantee/warranty statement at lifelinecelltech.com or contact your Lifeline representative for more information.



Call Lifeline Technical Service and Sales at 877.845.7787
Or visit lifelinecelltech.com for more information
Lifeline Cell Technology | 8415 Progress Drive, Suite T | Frederick, MD 21701
©2024 Lifeline Cell Technology, an International Stem Cell Company | All Rights Reserved