

## Specification Sheet

# UroLife™ Bladder Epithelial Cell Culture Medium

LL-0071  
LM-0054  
LS-1115



This product is for Research Use Only.  
This product is not approved for human or veterinary use or for use in in vitro diagnostics or clinical procedures.



**LIFELINE**  
CELL TECHNOLOGY

Better Solutions for  
Breakthrough Results

## UroLife Cell Culture Medium

UroLife is a new medium optimized for the culture of Human Bladder Epithelial Cells from the Apex (also known as the Neck or Trigone) region and the Dome region of the urinary bladder. UroLife supports the growth of these cells over a period of at least 15 population doublings.

UroLife Basal Medium contains no antimicrobials and no phenol red. Lifeline offers antimicrobials and phenol red; however they are not required for eukaryotic cell proliferation.

## UroLife Cell Culture Medium Components

UroLife is offered in a kit format composed of basal medium and associated supplements and growth factors called “LifeFactors™.” This kit allows you to prepare fresh medium in your laboratory, extending shelf life and enhancing performance. UroLife Basal Medium is provided in a light-protected 500 mL bottle. The remaining LifeFactors (growth factors and supplements) are packaged in a convenient gas-impermeable pouch for easy storage.

Product	Part No.	Volume	Final Concentrations in Supplemented Medium	Storage
<b>UroLife Medium Complete Kit, (UroLife Basal Medium, UroLife LifeFactors Kit)</b>	<a href="#">LL-0071</a>			2-8°C when prepare d
<b>UroLife Basal Medium</b>	<a href="#">LM-0054</a>	485 mL		2-8°C
<b>UroLife LifeFactors Kit</b>	<a href="#">LS-1115</a>			-20°C
rh Insulin LifeFactor	<a href="#">LS-1004</a>	0.5 mL	5 µg/mL	-20°C
rh EGF LifeFactor	<a href="#">LS-1015</a>	0.5 mL	5 ng/mL	-20°C
L-Glutamine LifeFactor	<a href="#">LS-1031</a>	15 mL	6 mM	-20°C
Epinephrine LifeFactor	<a href="#">LS-1032</a>	0.5 mL	1 µM	-20°C
Apo-Transferrin LifeFactor	<a href="#">LS-1033</a>	0.5 mL	5 µg/mL	-20°C
rh TGF-α	<a href="#">LS-1034</a>	0.5 mL	0.5 ng/mL	-20°C
Extract P™ LifeFactor	<a href="#">LS-1037</a>	2 mL	0.4%	-20°C
Hydrocortisone Hemisuccinate LifeFactor	<a href="#">LS-1039</a>	0.5 mL	100 ng/mL	-20°C
rh KGF LifeFactor	<a href="#">LS-1059</a>	1 mL	5 ng/mL	-20°C
Antimicrobial Supplement: Gentamicin and Amphotericin B (Provided with purchase of LL-0071)	<a href="#">LS-1104</a>	0.5 mL	Gentamicin 30 µg/mL Amphotericin B 15 ng/mL	-20°C
Optional Supplements	Part No.	Volume	Concentrations of Supplement	Storage
Phenol Red Supplement	<a href="#">LS-1009</a>	1 mL	33 mM	RT



Call Lifeline Technical Service and Sales at **877.845.7787**

Or visit [lifelinecelltech.com](http://lifelinecelltech.com) for more information

Lifeline Cell Technology | 8415 Progress Drive, Suite T | Frederick, MD 21701

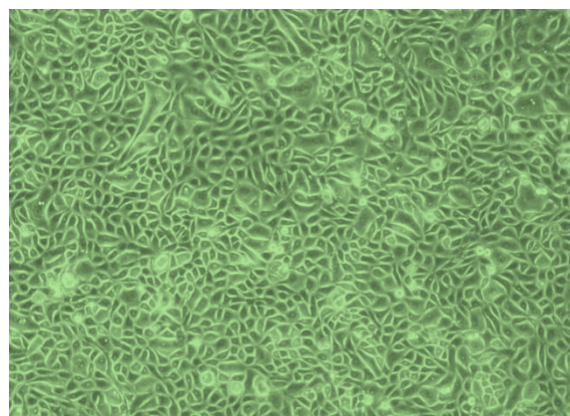
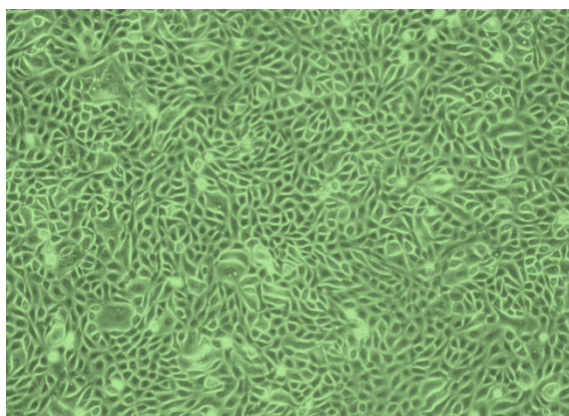
©2024 Lifeline Cell Technology, an International Stem Cell Company | All Rights Reserved

Other Recommended Products	Part No.	Unit	Storage
Normal Human Bladder Epithelial Cells – Apex (HBIEC-A)	<a href="#">FC-0040</a>	500,000 cells/mL	-150°C
Normal Human Bladder Epithelial Cells – Dome (HBIEC-D)	<a href="#">FC-0079</a>	500,000 cells/mL	-150°C

## Quality Testing for Guaranteed Consistency and Reproducible Results

Lifeline Cell Technology manufactures products using the highest quality raw materials and incorporates ISO style quality assurance in every production run. Exacting standards and production procedures ensure lot-to-lot consistency. Every production lot of UroLife™ Medium is extensively tested using Bladder Epithelial Cells. UroLife Medium and Gentamicin-Amphotericin B (LS-1104) are cell culture tested separately.

- Sterility Testing Negative for bacterial and fungal growth
- pH 7.8 +/- 0.3
- Cell Testing Rate of proliferation and morphology
- Osmolality 270 +/- 15 mOsm
- Endotoxin < 0.5 EU/mL



*Shown above left:* Human Bladder Epithelial Cells – Apex, passage 3, 6 days after inoculation with 3,000 cells/cm<sup>2</sup> (100X).  
*Shown above right:* Human Bladder Epithelial Cells – Dome, passage 3, 7 days after inoculation with 3,000 cells/cm<sup>2</sup> (100X).

UroLife Medium grows Human Bladder Epithelial Cells through at least 15 population doublings, while maintaining excellent cell morphology.

## The Lifeline® Guarantee

Lifeline's rigorous quality control ensures sterility and performance to standardized testing criteria. Upon request, Lifeline will provide lot-specific QC test results, material safety data sheets and certificates of analysis. See complete guarantee/warranty statement at [lifelinecelltech.com](http://lifelinecelltech.com) or contact your Lifeline representative for more information.



Call Lifeline Technical Service and Sales at **877.845.7787**

Or visit [lifelinecelltech.com](http://lifelinecelltech.com) for more information

Lifeline Cell Technology | 8415 Progress Drive, Suite T | Frederick, MD 21701

©2024 Lifeline Cell Technology, an International Stem Cell Company | All Rights Reserved

LL-0071  
LM-0054  
LS-1115



**Call Lifeline Technical Service and Sales at 877.845.7787**  
**Or visit [lifelinecelltech.com](https://lifelinecelltech.com) for more information**  
Lifeline Cell Technology | 8415 Progress Drive, Suite T | Frederick, MD 21701  
©2024 Lifeline Cell Technology, an International Stem Cell Company | All Rights Reserved