

## Specification Sheet

# VascuLife® SMC Smooth Muscle Cell Culture Medium

LL-0014  
LM-0002  
LS-1040



This product is for Research Use Only.  
This product is not approved for human or veterinary use or for use in in vitro diagnostics or clinical procedures.



**LIFELINE**  
CELL TECHNOLOGY

Better Solutions for  
Breakthrough Results

## VascuLife SMC Cell Culture Medium

VascuLife SMC is optimized for the culture of Human Smooth Muscle Cells. VascuLife SMC supports the growth of these cells over a period of at least 15 population doublings. VascuLife Basal Medium contains no antimicrobials and no phenol red. Lifeline offers antimicrobials and phenol red; however, they are not required for eukaryotic cell proliferation.

## VascuLife Cell Culture Medium Components

VascuLife is offered in a kit format composed of basal medium and associated supplements and growth factors called “LifeFactors™.” This kit allows you to prepare fresh medium in your laboratory, extending shelf life and enhancing performance. VascuLife Basal Medium is provided in a light-protected 500 mL bottle. The remaining LifeFactors (growth factors and supplements) are packaged in a convenient gas-impermeable pouch for easy storage.

Product	Part No.	Volume	Final Concentrations in Supplemented Medium	Storage
<b>VascuLife SMC Medium Complete Kit, (VascuLife Basal Medium, VascuLife SMC LifeFactors Kit)</b>	<a href="#">LL-0014</a>			2-8°C when prepared
<b>VascuLife Basal Medium</b>	<a href="#">LM-0002</a>	475 mL		2-8°C
<b>VascuLife SMC LifeFactors Kit</b>	<a href="#">LS-1040</a>			-20°C
rh FGF basic LifeFactor	<a href="#">LS-1002</a>	0.5 mL	5 ng/mL	-20°C
rh Insulin LifeFactor	<a href="#">LS-1004</a>	0.5 mL	5 µg/mL	-20°C
Ascorbic Acid LifeFactor	<a href="#">LS-1005</a>	0.5 mL	50 µg/mL	-20°C
L-Glutamine LifeFactor	<a href="#">LS-1013</a>	25 mL	10 mM	-20°C
rh EGF LifeFactor	<a href="#">LS-1015</a>	0.5 mL	5 ng/mL	-20°C
FBS LifeFactor	<a href="#">LS-1028</a>	25 mL	5%	-20°C
Antimicrobial Supplement: Gentamicin and Amphotericin B (Provided with purchase of LL-0014)	<a href="#">LS-1104</a>	0.5 mL	Gentamicin 30 µg/mL Amphotericin B 15 ng/mL	-20°C
<b>Optional Supplements</b>	<b>Part No.</b>	<b>Volume</b>	<b>Concentrations of Supplement</b>	<b>Storage</b>
Phenol Red Supplement	<a href="#">LS-1009</a>	1 mL	33 mM	RT

## Quality Testing for Guaranteed Consistency and Reproducible Results

Lifeline Cell Technology manufactures products using the highest quality raw materials and incorporates ISO style quality assurance in every production run. Exacting standards and production procedures ensure lot-to-lot consistency. Every production lot of VascuLife SMC Medium is extensively tested using Vascular Smooth Muscle Cells. VascuLife SMC Medium and Gentamicin-Amphotericin B (LS-1104) are cell culture tested separately.

- Sterility Testing Negative for bacterial and fungal growth
- pH 7.8 +/- 0.3
- Cell Testing Rate of proliferation and morphology
- Osmolality 270 +/- 10 mOsm
- Endotoxin < 0.5 EU/mL

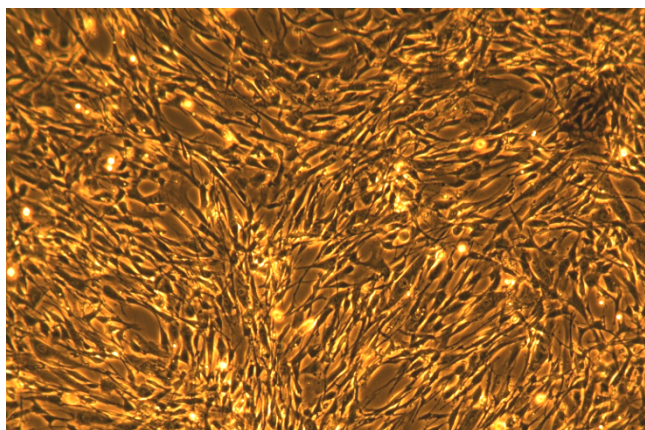


Call Lifeline Technical Service and Sales at **877.845.7787**

Or visit [lifelinecelltech.com](http://lifelinecelltech.com) for more information

Lifeline Cell Technology | 8415 Progress Drive, Suite T | Frederick, MD 21701

©2024 Lifeline Cell Technology, an International Stem Cell Company | All Rights Reserved

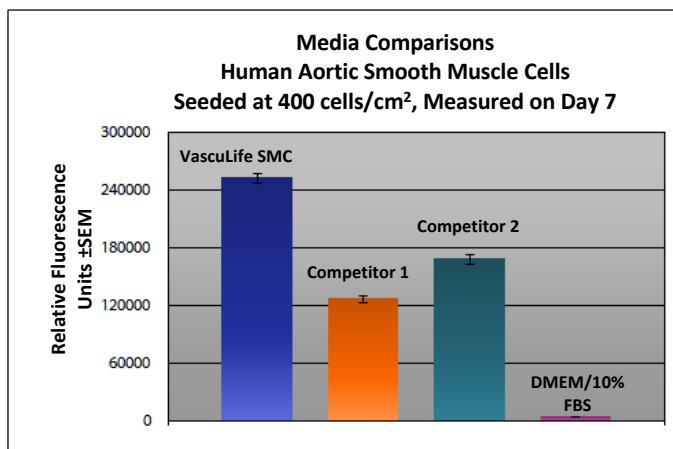
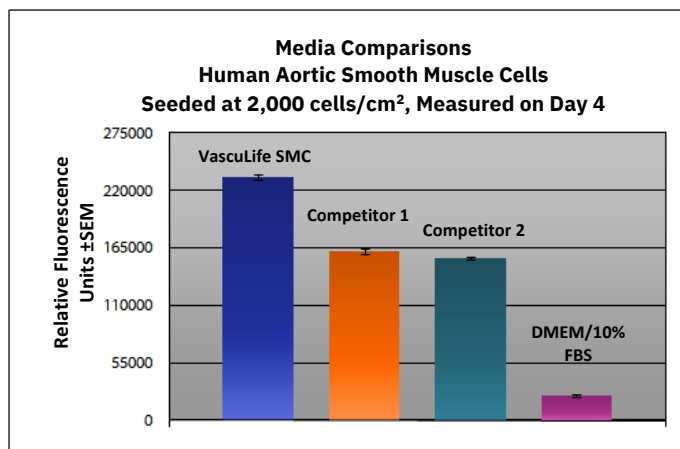


VascuLife® SMC Medium grows Human Smooth Muscle Cells through at least 15 population doublings at rates that meet or exceed other commercially available serum-containing media while maintaining excellent cell morphology. In comparisons with other commercially available media, VascuLife shows superior proliferation at different seeding densities.

*Shown left:* Human Aortic Smooth Muscle Cells, passage 2, 4 days after inoculation with 2,500 cells/cm<sup>2</sup> (100X).

*Shown below:* Human Aortic Smooth Muscle Cells inoculated at low seeding density in 24-well plates. Higher fluorescence

represents a greater number of cells per well and therefore better proliferation.



## The Lifeline® Guarantee

Lifeline's rigorous quality control ensures sterility and performance to standardized testing criteria. Upon request, Lifeline will provide lot-specific QC test results, material safety data sheets and certificates of analysis. See complete guarantee/warranty statement at [lifelinecelltech.com](http://lifelinecelltech.com) or contact your Lifeline representative for more information.



Call Lifeline Technical Service and Sales at **877.845.7787**

Or visit **[lifelinecelltech.com](http://lifelinecelltech.com)** for more information

Lifeline Cell Technology | 8415 Progress Drive, Suite T | Frederick, MD 21701

©2024 Lifeline Cell Technology, an International Stem Cell Company | All Rights Reserved