

Specification Sheet

DermaLife™ M Melanocyte Culture Medium

LL-0027
LM-0004
LS-1041



This product is for Research Use Only.
This product is not approved for human or veterinary use or for use in in vitro diagnostics or clinical procedures.



LIFELINE
CELL TECHNOLOGY

Better Solutions for
Breakthrough Results

DermaLife M Cell Culture Medium

DermaLife M is a low serum, PMA-free, Cholera toxin-free medium optimized for the culture of Human Epidermal Melanocytes-Neonatal (HEMn). DermaLife M supports the growth of these cells over a period of at least 15 population doublings. DermaLife Basal Medium contains no antimicrobials and no phenol red. Lifeline offers antimicrobials and phenol red; however, they are not required for eukaryotic cell proliferation.

DermaLife M Cell Culture Medium Components

DermaLife M is offered in a kit format composed of basal medium and associated supplements and growth factors called “LifeFactors™.” This kit allows you to prepare fresh medium in your laboratory, extending shelf life and enhancing performance. DermaLife Basal Medium is provided in a light-protected 500 mL bottle. The remaining LifeFactors (growth factors and supplements) are packaged in a convenient gas-impermeable pouch for easy storage.

Product	Part No.	Volume	Final Concentrations in Supplemented Medium	Storage
DermaLife M Medium Complete Kit, (DermaLife Basal Medium, DermaLife M LifeFactors Kit)	LL-0027			2-8°C when prepared
DermaLife Basal Medium	LM-0004	485 mL		2-8°C
DermaLife M LifeFactors Kit	LS-1041			-20°C
rh-Insulin LifeFactor	LS-1004	0.5 mL	5 µg/mL	-20°C
Ascorbic Acid LifeFactor	LS-1005	0.5 mL	50 µg/mL	-20°C
L-Glutamine LifeFactor	LS-1031	15 mL	6 mM	-20°C
Epinephrine LifeFactor	LS-1032	0.5 mL	1 µM	-20°C
StiMel8™ LifeFactor	LS-1050	5 mL	Contains: FBS, rh FGF-b, rh EGF, Endothelin-1, Apo-Transferrin, Hydrocortisone Hemisuccinate, Bovine Pituitary Extract	-20°C
Calcium Chloride LifeFactor	LS-1087	0.5 mL	0.2 mM	-20°C
Antimicrobial Supplement: Gentamicin and Amphotericin B (Provided with purchase of LL-0027)	LS-1104	0.5 mL	Gentamicin 30 µg/mL Amphotericin B 15 ng/mL	-20°C
Optional Supplements	Part No.	Volume	Concentrations of Supplement	Storage
Phenol Red Supplement	LS-1009	1 mL	33 mM	RT

Quality Testing for Guaranteed Consistency and Reproducible Results

Lifeline Cell Technology manufactures products using the highest quality raw materials and incorporates ISO style quality assurance in every production run. Exacting standards and production procedures ensure lot-to-lot consistency.



Call Lifeline Technical Service and Sales at **877.845.7787**

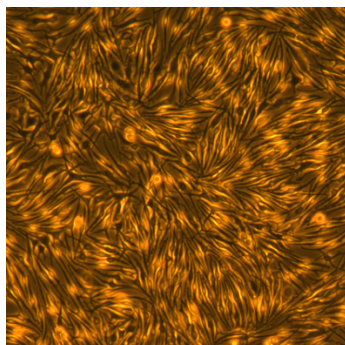
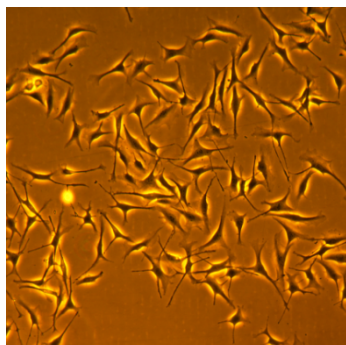
Or visit **lifelinecelltech.com** for more information

Lifeline Cell Technology | 8415 Progress Drive, Suite T | Frederick, MD 21701

©2024 Lifeline Cell Technology, an International Stem Cell Company | All Rights Reserved

Every production lot of DermaLife M Medium is extensively tested using normal human melanocytes. DermaLife M Medium and Gentamicin-Amphotericin B (LS-1104) are cell culture tested separately.

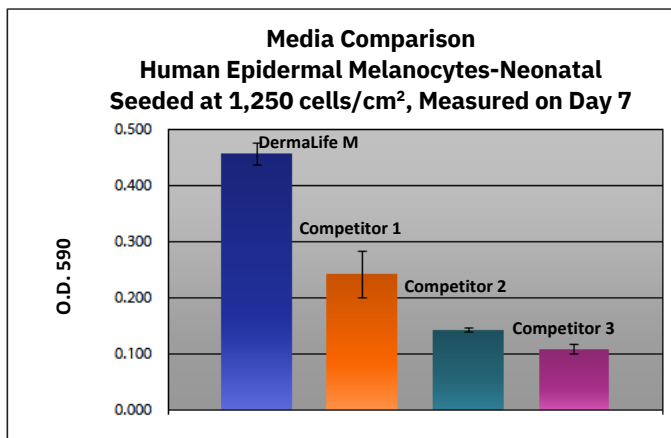
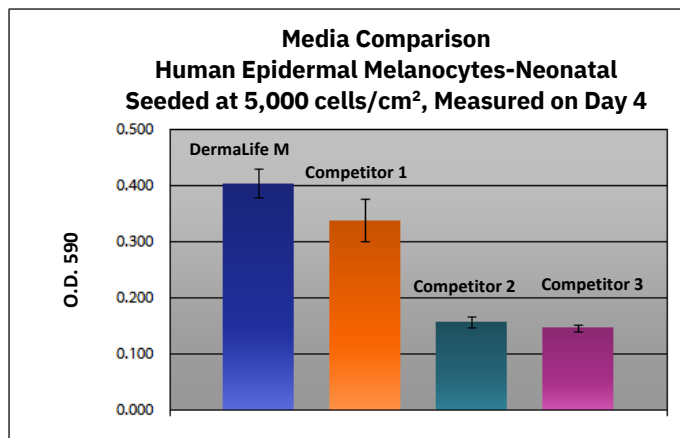
- | | | | |
|---------------------|--|--------------|-----------------|
| • Sterility Testing | Negative for bacterial and fungal growth | • Osmolality | 315 +/- 10 mOsm |
| • pH | 7.5 +/- 0.2 | • Endotoxin | < 0.5 EU/mL |
| • Cell Testing | Rate of proliferation and morphology | | |



DermaLife™ M Medium grows Human Epidermal Melanocytes-Neonatal (HEMn) through at least 15 population doublings at rates that exceed other commercially available media containing PMA or cholera toxin while maintaining excellent cell morphology and L-DOPA Oxidase activity. In comparisons with other commercially available media, DermaLife M shows superior proliferation at different seeding densities over a period of 7 days without media replacement.

Shown above: Human Epidermal Melanocytes-Neonatal, passage 4 inoculated with 2,500 cells/cm², (100X);
Left: 3 days after inoculation Right: 6 days after inoculation

Shown below: Human Epidermal Melanocytes-Neonatal inoculated at the stated density in 24-well plates and stained with crystal violet on Day 4 or Day 7. Higher O.D. 590 represents a greater number of cells per well and therefore better proliferation.



The Lifeline® Guarantee

Lifeline's rigorous quality control ensures sterility and performance to standardized testing criteria. Upon request, Lifeline will provide lot-specific QC test results, material safety data sheets and certificates of analysis. See complete guarantee/warranty statement at lifelinecelltech.com or contact your Lifeline representative for more information.



Call Lifeline Technical Service and Sales at **877.845.7787**
Or visit **lifelinecelltech.com** for more information
Lifeline Cell Technology | 8415 Progress Drive, Suite T | Frederick, MD 21701
©2024 Lifeline Cell Technology, an International Stem Cell Company | All Rights Reserved