

Specification Sheet

MammaryLife™ Mammary Epithelial Cell Culture Medium

LL-0061

LM-0041

LS-1088



This product is for Research Use Only.
This product is not approved for human or
veterinary use or for use in in vitro
diagnostics or clinical procedures.



LIFELINE
CELL TECHNOLOGY

Better Solutions for
Breakthrough Results

MammaryLife Cell Culture Medium

MammaryLife is a new medium optimized for the culture of human mammary epithelial cells. MammaryLife supports the growth of these cells over a period of at least 15 population doublings.

MammaryLife Basal Medium contains no antimicrobials and no phenol red. Lifeline offers antimicrobials and phenol red; however, they are not required for eukaryotic cell proliferation.

MammaryLife Culture Medium Components

MammaryLife is offered in a kit format composed of basal medium and associated supplements and growth factors called “LifeFactors™.” This kit allows preparation of fresh medium in your laboratory, extending shelf life and enhancing performance. MammaryLife Basal Medium is provided in a light-protected 500 mL bottle. The remaining LifeFactors (growth factors and supplements) are packaged in a convenient gas-impermeable pouch for easy storage.

Product	Part No.	Volume	Final Concentrations in Supplemented Medium	Storage
MammaryLife Medium Complete Kit, (MammaryLife Basal Medium, MammaryLife LifeFactors Kit)	LL-0061			2-8°C when prepared
MammaryLife Basal Medium	LM-0041	485 mL		2-8°C
MammaryLife LifeFactors Kit	LS-1088			-20°C
rh Insulin LifeFactor	LS-1004	0.5 mL	5 µg/mL	-20°C
L-Glutamine LifeFactor	LS-1031	15 mL	6 mM	-20°C
Epinephrine LifeFactor	LS-1032	0.5 mL	1 µM	-20°C
Apo-Transferrin LifeFactor	LS-1033	0.5 mL	5 µg/mL	-20°C
rh TGF-α LifeFactor	LS-1034	0.5 mL	0.5 ng/mL	-20°C
Extract P™ LifeFactor	LS-1037	2 mL	0.4%	-20°C
Hydrocortisone Hemisuccinate LifeFactor	LS-1039	0.5 mL	100 ng/mL	-20°C
Antimicrobial Supplement: Gentamicin and Amphotericin B (Provided with purchase of LL-0061)	LS-1104	0.5 mL	Gentamicin 30 µg/mL Amphotericin B 15 ng/mL	-20°C
Optional Supplements	Part No.	Volume	Concentrations of Supplement	Storage
Phenol Red Supplement	LS-1009	1 mL	33 mM	RT

Quality Testing for Guaranteed Consistency and Reproducible Results

Lifeline Cell Technology manufactures products using the highest quality raw materials and incorporates ISO style quality assurance in every production run. Exacting standards and production procedures ensure lot-to-lot consistency. Every production lot of MammaryLife Medium is extensively tested using human mammary epithelial cells. MammaryLife Medium and Gentamicin-Amphotericin B (LS-1104) are cell culture tested separately.



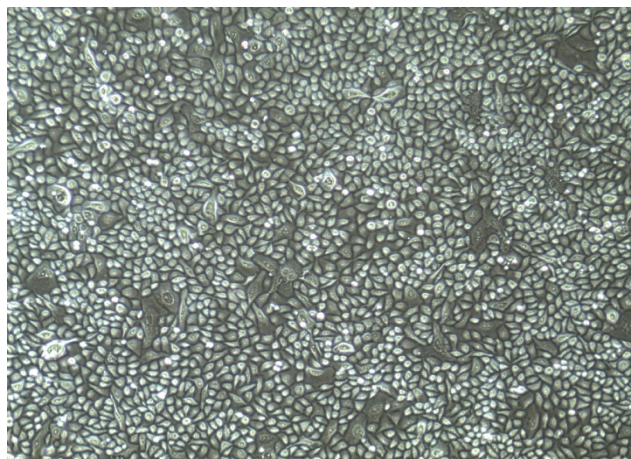
Call Lifeline Technical Service and Sales at **877.845.7787**

Or visit lifelinecelltech.com for more information

Lifeline Cell Technology | 8415 Progress Drive, Suite T | Frederick, MD 21701

©2024 Lifeline Cell Technology, an International Stem Cell Company | All Rights Reserved

- | | | | |
|---------------------|--|--------------|-----------------|
| • Sterility Testing | Negative for bacterial and fungal growth | • Osmolality | 315 +/- 10 mOsm |
| • pH | 7.5 +/- 0.2 | • Endotoxin | < 0.5 EU/mL |
| • Cell Testing | Rate of proliferation and morphology | | |



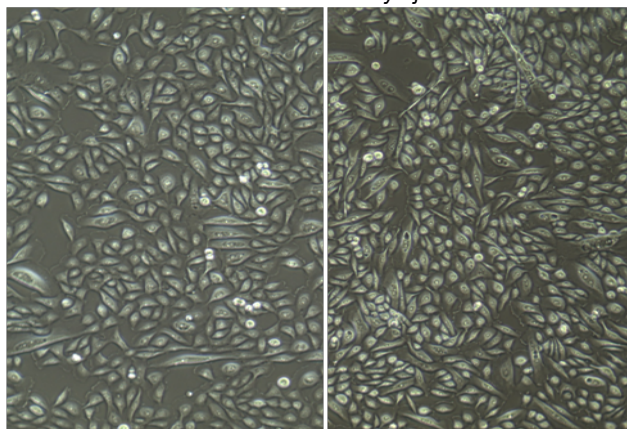
MammaryLife™ Medium grows Human Mammary Epithelial Cells (HMEC) through at least 15 population doublings at rates that meet or exceed other commercially available media while maintaining excellent cell morphology. In comparisons with other commercially available medium, MammaryLife Medium induces superior proliferation and morphology in HMEC.

Shown left: HMEC, passage 4, 5 days after inoculation with 5,000 cells/cm² in MammaryLife (100X).

Shown below: HMEC, passage 4, 5 days after inoculation with 5,000 cells/cm² in competitor media (left) or MammaryLife (right) (100X).

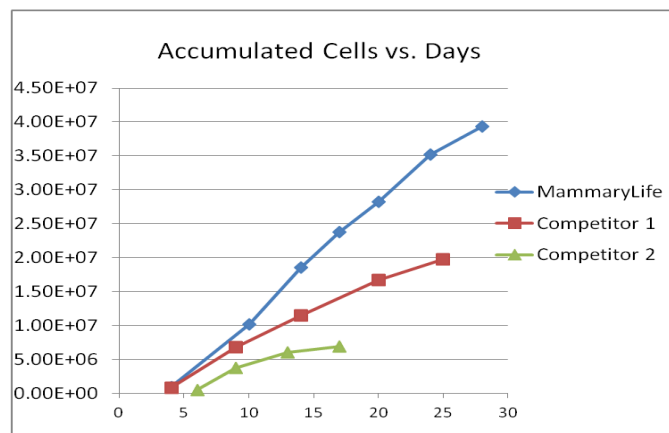
MammaryLife Medium is superior to competitor media for morphology and proliferation of HMEC.

HMEC in MammaryLife



HMEC in Competitor 1

HMEC in Competitor 2



MammaryLife outperforms competitor media.

The Lifeline® Guarantee

Lifeline's rigorous quality control ensures sterility and performance to standardized testing criteria. Upon request, Lifeline will provide lot-specific QC test results, material safety data sheets and certificates of analysis. See complete guarantee/warranty statement at lifelinecelltech.com or contact your Lifeline representative for more information.



Call Lifeline Technical Service and Sales at **877.845.7787**

Or visit **lifelinecelltech.com** for more information

Lifeline Cell Technology | 8415 Progress Drive, Suite T | Frederick, MD 21701

©2024 Lifeline Cell Technology, an International Stem Cell Company | All Rights Reserved