

Specification Sheet

OcuLife™ Corneal Epithelial Cell Culture Medium

LL-0032
LM-0012
LS-1057



This product is for Research Use Only.
This product is not approved for human or
veterinary use or for use in in vitro
diagnostics or clinical procedures.



LIFELINE
CELL TECHNOLOGY

Better Solutions for
Breakthrough Results

LL-0032

LM-0012

LS-1057

OcuLife Cell Culture Medium

OcuLife is optimized for the culture of Human Corneal Epithelial Cells. OcuLife supports the growth of these cells over a period of at least three passages. OcuLife Basal Medium contains no antimicrobials and no phenol red. Lifeline offers antimicrobials and phenol red; however, they are not required for eukaryotic cell proliferation.

OcuLife Culture Medium Components

OcuLife is offered in a kit format composed of basal medium and associated supplements and growth factors called “LifeFactors™.” This kit allows you to prepare fresh medium in your laboratory, extending shelf life and enhancing performance. OcuLife Basal Medium is provided in a light-protected 500 mL bottle. The remaining LifeFactors (growth factors and supplements) are packaged in a convenient gas-impermeable pouch for easy storage.

Product	Part No.	Volume	Final Concentrations in Supplemented Medium	Storage
OcuLife Medium Complete Kit, (OcuLife Basal Medium, OcuLife LifeFactors Kit)	LL-0032			2-8°C when prepared
OcuLife Basal Medium	LM-0012	485 mL		2-8°C
OcuLife LifeFactors Kit	LS-1057			-20°C
rh Insulin LifeFactor	LS-1004	0.5 mL	5 µg/mL	-20°C
L-Glutamine LifeFactor	LS-1031	15 mL	6 mM	-20°C
Epinephrine LifeFactor	LS-1032	0.5 mL	1 µM	-20°C
Apo-Transferrin LifeFactor	LS-1033	0.5 mL	5 µg/mL	-20°C
Extract P™ LifeFactor	LS-1037	2 mL	0.4%	-20°C
Hydrocortisone Hemisuccinate LifeFactor	LS-1039	0.5 mL	100 ng/mL	-20°C
OcuFactor™ LifeFactor	LS-1076	1 mL	Proprietary	-20°C
Antimicrobial Supplement: Gentamicin and Amphotericin B (Provided with purchase of LL-0032)	LS-1104	0.5 mL	Gentamicin 30 µg/mL Amphotericin B 15 ng/mL	-20°C
Optional Supplements	Part No.	Volume	Concentrations of Supplement	Storage
Phenol Red Supplement	LS-1009	1 mL	33 mM	RT

Quality Testing for Guaranteed Consistency and Reproducible Results

Lifeline Cell Technology manufactures products using the highest quality raw materials and incorporates ISO style quality assurance in every production run. Exacting standards and production procedures ensure lot-to-lot consistency. Every production lot of OcuLife Medium is extensively tested using human corneal epithelial cells. OcuLife Medium and Gentamicin-Amphotericin B (LS-1104) are cell culture tested separately.



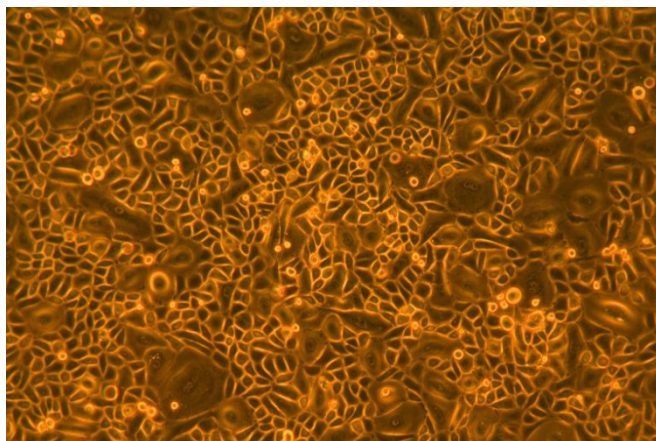
Call Lifeline Technical Service and Sales at **877.845.7787**

Or visit lifelinecelltech.com for more information

Lifeline Cell Technology | 8415 Progress Drive, Suite T | Frederick, MD 21701

©2024 Lifeline Cell Technology, an International Stem Cell Company | All Rights Reserved

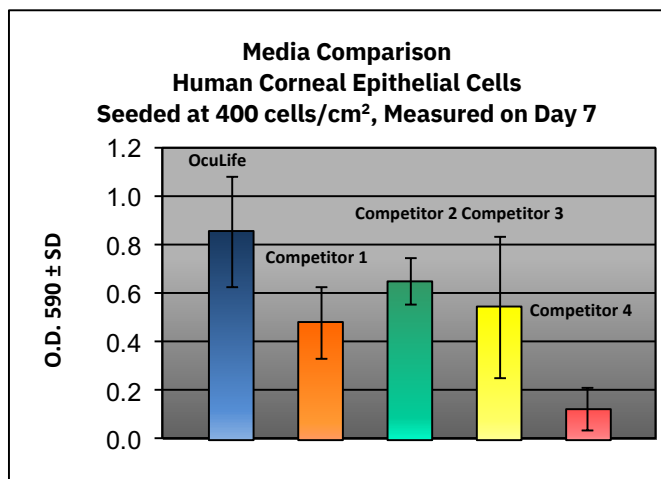
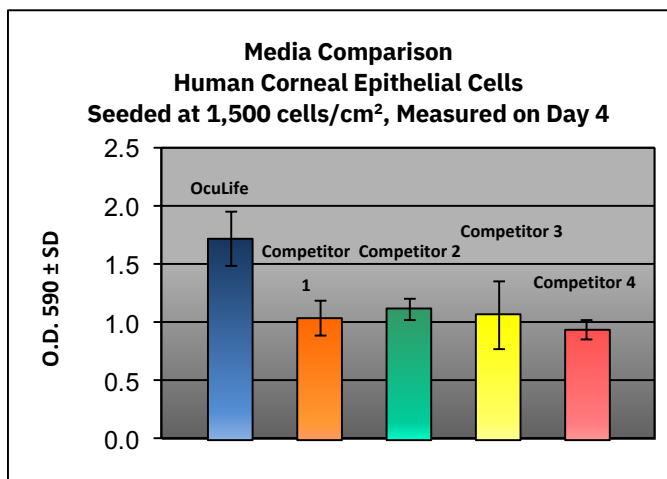
- | | | | |
|---------------------|--|--------------|-----------------|
| • Sterility Testing | Negative for bacterial and fungal growth | • Osmolality | 315 +/- 10 mOsm |
| • pH | 7.5 +/- 0.2 | • Endotoxin | < 0.5 EU/mL |
| • Cell Testing | Rate of proliferation and morphology | | |



OcuLife™ Medium grows Human Corneal Epithelial Cells with optimal morphology over a period of at least three passages. In comparisons with other commercially available media, OcuLife shows superior proliferation at different seeding densities.

Shown left: Human Corneal Epithelial Cells, passage 3, 8 days after inoculation at 5,000 cells/cm² (100X).

Shown below: Human Corneal Epithelial Cells inoculated at the stated density in 24-well plates and stained with crystal violet. Higher O.D. 590 represents a greater number of cells per well and therefore better proliferation.



The Lifeline® Guarantee

Lifeline's rigorous quality control ensures sterility and performance to standardized testing criteria. Upon request, Lifeline will provide lot-specific QC test results, material safety data sheets and certificates of analysis. See complete guarantee/warranty statement at lifelinecelltech.com or contact your Lifeline representative for more information.



Call Lifeline Technical Service and Sales at 877.845.7787
Or visit lifelinecelltech.com for more information
Lifeline Cell Technology | 8415 Progress Drive, Suite T | Frederick, MD 21701
©2024 Lifeline Cell Technology, an International Stem Cell Company | All Rights Reserved