

## Specification Sheet

# RenaLife™ Cell Culture Medium

LL-0025  
LM-0010  
LS-1048



This product is for Research Use Only.  
This product is not approved for human or  
veterinary use or for use in in vitro  
diagnostics or clinical procedures.



**LIFELINE**  
CELL TECHNOLOGY

Better Solutions for  
Breakthrough Results

## RenaLife Cell Culture Medium

RenaLife is optimized for the culture of Human Renal Epithelial Cells. RenaLife supports the growth of these cells over a period of at least 15 population doublings.

RenaLife Basal Medium contains no antimicrobials and no phenol red. Lifeline offers antimicrobials and phenol red; however, they are not required for eukaryotic cell proliferation.

## RenaLife Cell Culture Medium Components

RenaLife is offered in a kit format composed of basal medium and associated supplements and growth factors called “LifeFactors™.” This kit allows you to prepare fresh medium in your laboratory, extending shelf life and enhancing performance. RenaLife Basal Medium is provided in a light-protected 500 mL bottle. The remaining LifeFactors (growth factors and supplements) are packaged in a convenient gas-impermeable pouch for easy storage.

Product	Part No.	Volume	Final Concentrations in Supplemented Medium	Storage
<b>RenaLife Medium Complete Kit, (RenaLife Basal Medium, RenaLife LifeFactors Kit)</b>	<a href="#">LL-0025</a>			2-8°C when prepared
<b>RenaLife Basal Medium</b>	<a href="#">LM-0010</a>	485 mL		2-8°C
<b>RenaLife LifeFactors Kit</b>	<a href="#">LS-1048</a>			-20°C
rh Insulin LifeFactor	<a href="#">LS-1004</a>	0.5 mL	5 µg/mL	-20°C
Epinephrine LifeFactor	<a href="#">LS-1032</a>	0.5 mL	1 µM	-20°C
Hydrocortisone Hemisuccinate LifeFactor	<a href="#">LS-1039</a>	0.5 mL	0.1 µg/mL	-20°C
FBS LifeFactor	<a href="#">LS-1042</a>	2.5 mL	0.5%	-20°C
Triiodothyronine LifeFactor	<a href="#">LS-1044</a>	0.5 mL	10 nM	-20°C
rh EGF LifeFactor	<a href="#">LS-1046</a>	1 mL	10 ng/mL	-20°C
Transferrin PS LifeFactor	<a href="#">LS-1052</a>	0.5 mL	5 µg/mL	-20°C
L-Alanyl-L-Glutamine LifeFactor	<a href="#">LS-1053</a>	6 mL	2.4 mM	-20°C
Antimicrobial Supplement: Gentamicin and Amphotericin B (Provided with purchase of LL-0025)	<a href="#">LS-1104</a>	0.5 mL	Gentamicin 30 µg/mL Amphotericin B 15 ng/mL	-20°C
Optional Supplements	Part No.	Volume	Concentrations of Supplement	Storage
Calcium Chloride LifeFactor	<a href="#">LS-1062</a>	1 mL	890 mM	RT
Calcium Chloride LifeFactor	<a href="#">LS-1087</a>	0.5 mL	140 mM	RT
Phenol Red Supplement	<a href="#">LS-1009</a>	1 mL	33 mM	RT



Call Lifeline Technical Service and Sales at **877.845.7787**

Or visit [lifelinecelltech.com](http://lifelinecelltech.com) for more information

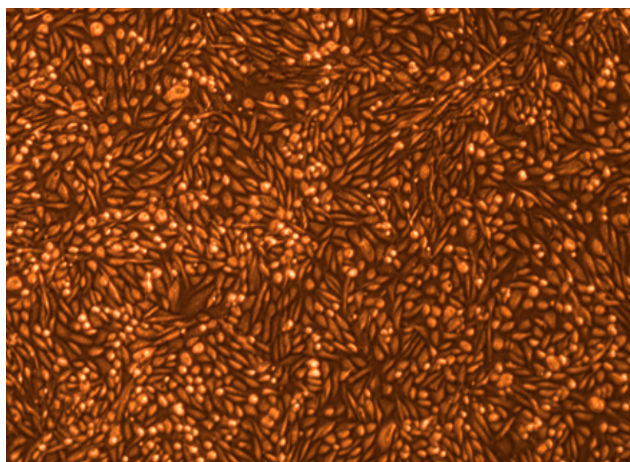
Lifeline Cell Technology | 8415 Progress Drive, Suite T | Frederick, MD 21701

©2024 Lifeline Cell Technology, an International Stem Cell Company | All Rights Reserved

## Quality Testing for Guaranteed Consistency and Reproducible Results

Lifeline Cell Technology manufactures products using the highest quality raw materials and incorporates ISO style quality assurance in every production run. Exacting standards and production procedures ensure lot-to-lot consistency. Every production lot of RenaLife Medium is extensively tested using Human Renal Epithelial Cells. RenaLife Medium and Gentamicin-Amphotericin B (LS-1104) are cell culture tested separately.

- |                     |  |              |                 |
|---------------------|--|--------------|-----------------|
| • Sterility Testing | Negative for bacterial and fungal growth | • Osmolality | 315 +/- 10 mOsm |
| • pH                | 7.5 +/- 0.2                              | • Endotoxin  | < 0.5 EU/mL     |
| • Cell Testing      | Rate of proliferation and morphology     |              |                 |

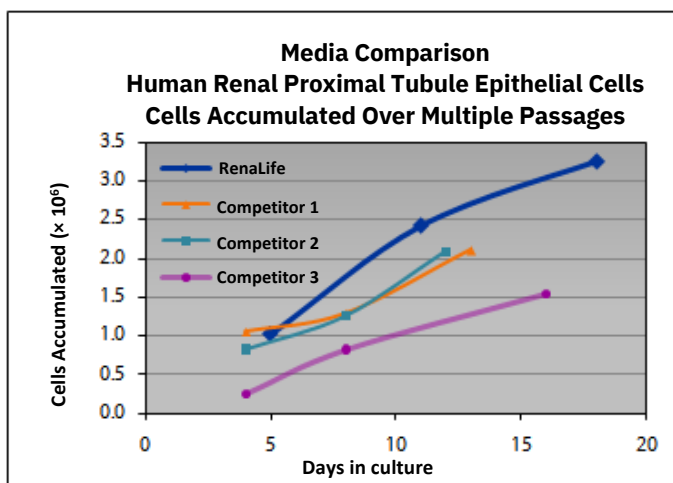
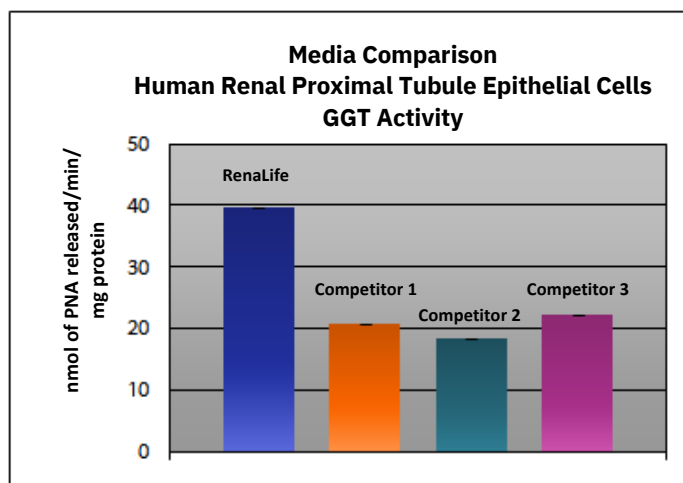


RenaLife™ Medium grows Human Renal Epithelial Cells through at least 15 population doublings at rates that are comparable to other commercially available low-serum media while maintaining more characteristic epithelial morphology, e.g. more compact cuboidal shape, high refractive index and clarity of the cytoplasm.

*Shown left:* Renal Cortical Epithelial Cells, third subculture (100X).

*Shown below:* gamma-Glutamyltransferase (GGT) assay. The substrate (gamma-glutamyl-p-nitroanilide) and acceptor molecule (glycylglycine) are incubated with the cells in a sodium phosphate buffer for 30 minutes at 37°C. The released product is p-nitroaniline (PNA). The absorbance at 405 nm is measured and compared against a standard curve of PNA. Protein is quantified

using a modified Bradford method.



LL-0025  
LM-0010  
LS-1048

### The Lifeline® Guarantee

Lifeline's rigorous quality control ensures sterility and performance to standardized testing criteria. Upon request, Lifeline will provide lot-specific QC test results, material safety data sheets and certificates of analysis. See complete guarantee/warranty statement at [lifelinecelltech.com](https://lifelinecelltech.com) or contact your Lifeline representative for more information.



Call Lifeline Technical Service and Sales at **877.845.7787**

Or visit **[lifelinecelltech.com](https://lifelinecelltech.com)** for more information

Lifeline Cell Technology | 8415 Progress Drive, Suite T | Frederick, MD 21701

©2024 Lifeline Cell Technology, an International Stem Cell Company | All Rights Reserved