

## Specification Sheet

# ReproLife™ CX Cervical Epithelial Cell Culture Medium

LL-0072  
LM-0055  
LS-1116



This product is for Research Use Only.  
This product is not approved for human or veterinary use or for use in in vitro diagnostics or clinical procedures.



**LIFELINE**  
CELL TECHNOLOGY

Better Solutions for  
Breakthrough Results

## ReproLife CX Cell Culture Medium

ReproLife CX is a new medium optimized for the culture of Normal Human Cervical Epithelial Cells (HCxEC). ReproLife CX supports the growth of these cells over a period of at least 10 population doublings. ReproLife CX also supports Normal Human Fallopian Tube Epithelial Cells (HFTEC) for at least 5 population doublings.

ReproLife CX Basal Medium contains no antimicrobials and no phenol red. Lifeline offers antimicrobials and phenol red; however, they are not required for eukaryotic cell proliferation.

## ReproLife CX Cell Culture Medium Components

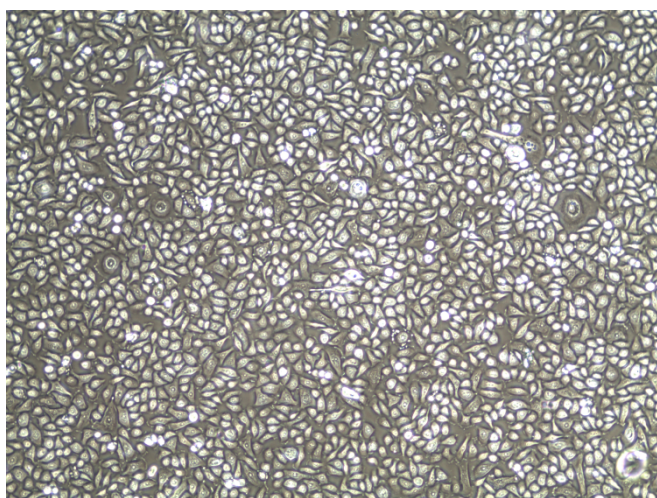
ReproLife CX is offered in a kit format composed of basal medium and associated supplements and growth factors called “LifeFactors™.” This kit allows preparation of fresh medium in your laboratory, extending shelf life and enhancing performance. ReproLife CX Basal Medium is provided in a light-protected 500 mL bottle. The remaining LifeFactors (growth factors and supplements) are packaged in a convenient gas-impermeable pouch for easy storage.

Product	Part No.	Volume	Final Concentrations in Supplemented Medium	Storage
<b>ReproLife CX Medium Complete Kit, (ReproLife CX Basal Medium, ReproLife CX LifeFactors Kit)</b>	<a href="#">LL-0072</a>			2-8°C when prepared
<b>ReproLife CX Basal Medium</b>	<a href="#">LM-0055</a>	485 mL		2-8°C
<b>ReproLife CX LifeFactors Kit</b>	<a href="#">LS-1116</a>			-20°C
HLL Supplement LifeFactor	<a href="#">LS-1001</a>	1.25 mL	HSA-500 µg/mL Linoleic Acid-0.6 µM Lecithin-0.6 µg/mL	-20°C
rh Insulin LifeFactor	<a href="#">LS-1004</a>	0.5 mL	5 µg/mL	-20°C
rh EGF LifeFactor	<a href="#">LS-1015</a>	0.5 mL	5 ng/mL	-20°C
L-Glutamine LifeFactor	<a href="#">LS-1031</a>	15 mL	6 mM	-20°C
Epinephrine LifeFactor	<a href="#">LS-1032</a>	0.5 mL	1 µM	-20°C
Extract P™ LifeFactor	<a href="#">LS-1037</a>	2 mL	0.4%	-20°C
Hydrocortisone Hemisuccinate LifeFactor	<a href="#">LS-1039</a>	0.5 mL	100 ng/mL	-20°C
Triiodothyronine LifeFactor	<a href="#">LS-1044</a>	0.5 mL	10 nM	-20°C
PS Transferrin LifeFactor	<a href="#">LS-1052</a>	0.5 mL	5 µg/mL	-20°C
Antimicrobial Supplement: Gentamicin and Amphotericin B (Provided with purchase of LL-0072)	<a href="#">LS-1104</a>	0.5 mL	Gentamicin 30 µg/mL Amphotericin B 15 ng/mL	-20°C
<b>Optional Supplements</b>	<b>Part No.</b>	<b>Volume</b>	<b>Concentrations of Supplement</b>	<b>Storage</b>
Phenol Red Supplement	<a href="#">LS-1009</a>	1 mL	33 mM	RT

## Quality Testing for Guaranteed Consistency and Reproducible Results

Lifeline Cell Technology manufactures products using the highest quality raw materials and incorporates ISO style quality assurance in every production run. Exacting standards and production procedures ensure lot-to-lot consistency. Every production lot of ReproLife CX Medium is extensively tested using Human Cervical Epithelial Cells. ReproLife CX Medium and Gentamicin-Amphotericin B (LS-1104) are cell culture tested separately.

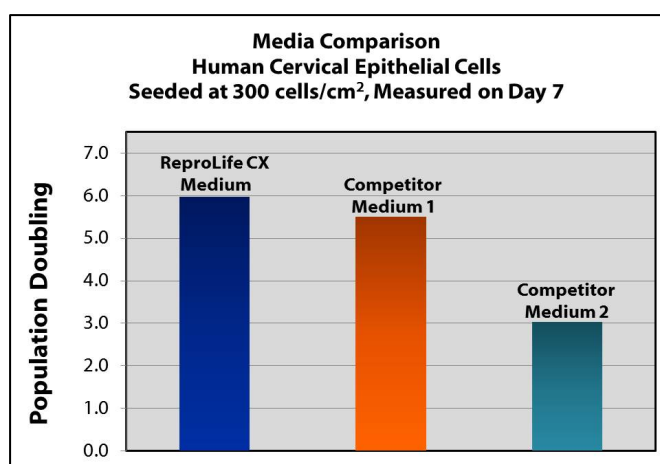
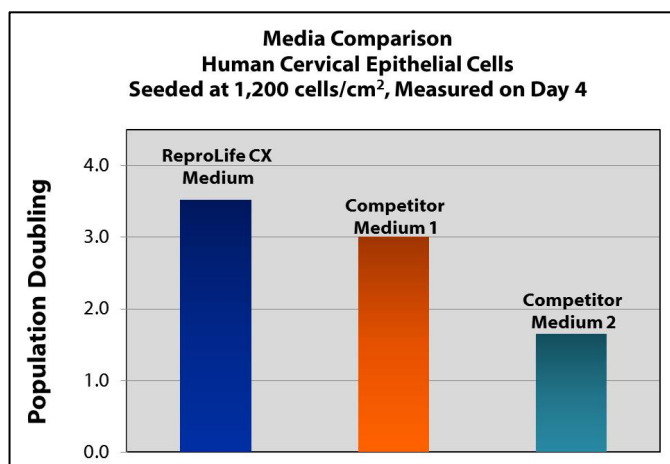
- |                     |                                          |              |                 |
|---------------------|------------------------------------------|--------------|-----------------|
| • Sterility Testing | Negative for bacterial and fungal growth | • Osmolality | 315 +/- 10 mOsm |
| • pH                | 7.5 +/- 0.2                              | • Endotoxin  | < 0.5 EU/mL     |
| • Cell Testing      | Rate of proliferation and morphology     |              |                 |



ReproLife™ CX Medium grows Normal Human Cervical Epithelial Cells through at least 5 population doublings, at rates that meet or exceed other commercially available media while maintaining excellent cell morphology. In comparison with other commercially available media, ReproLife CX shows superior proliferation at different seeding densities.

*Shown left:* Human Cervical Epithelial Cells, passage 4, 5 days after inoculation with 5,000 cells/cm<sup>2</sup> (100X).

*Shown below:* Proliferation at low seeding density. Human Cervical Epithelial Cells were inoculated at the stated density and then harvested. Cells were counted and the number of population doublings was calculated.



LL-0072  
LM-0055  
LS-1116

### The Lifeline® Guarantee

Lifeline's rigorous quality control ensures sterility and performance to standardized testing criteria. Upon request, Lifeline will provide lot-specific QC test results, material safety data sheets and certificates of analysis. See complete guarantee/warranty statement at [lifelinecelltech.com](http://lifelinecelltech.com) or contact your Lifeline representative for more information.



Call Lifeline Technical Service and Sales at **877.845.7787**

Or visit **[lifelinecelltech.com](http://lifelinecelltech.com)** for more information

Lifeline Cell Technology | 8415 Progress Drive, Suite T | Frederick, MD 21701

©2024 Lifeline Cell Technology, an International Stem Cell Company | All Rights Reserved