

Specification Sheet

ReproLife™ Female Reproductive Epithelial Cell Culture Medium

LL-0068

LM-0044

LS-1097



This product is for Research Use Only.
This product is not approved for human or
veterinary use or for use in in vitro
diagnostics or clinical procedures.



LIFELINE
CELL TECHNOLOGY

Better Solutions for
Breakthrough Results

ReproLife Cell Culture Medium

ReproLife is a new medium optimized for the culture of Normal Human Female Reproductive Epithelial Cells: Endometrial (Uterine) Epithelial Cells (HEuEC), and Vaginal Epithelial Cells (HVEC). ReproLife supports the growth of HEuEC over a period of at least 5 population doublings and HVEC over a period of at least 10 population doublings.

ReproLife Basal Medium contains no antimicrobials and no phenol red. Lifeline offers antimicrobials and phenol red; however they are not required for eukaryotic cell proliferation.

ReproLife Cell Culture Medium Components

ReproLife is offered in a kit format composed of basal medium and associated supplements and growth factors called “LifeFactors™.” This kit allows preparation of fresh medium in your laboratory, extending shelf life and enhancing performance. ReproLife Basal Medium is provided in a light-protected 500 mL bottle. The remaining LifeFactors (growth factors and supplements) are packaged in a convenient gas-impermeable pouch for easy storage.

Product	Part No.	Volume	Final Concentrations in Supplemented Medium	Storage
ReproLife Medium Complete Kit, (ReproLife Basal Medium, ReproLife LifeFactors Kit)	LL-0068			2-8°C when prepared
ReproLife Basal Medium	LM-0044	485 mL		2-8°C
ReproLife LifeFactors Kit	LS-1097			-20°C
L-Glutamine LifeFactor	LS-1031	15 mL	6 mM	-20°C
Epinephrine LifeFactor	LS-1032	0.5 mL	1 µM	-20°C
Hydrocortisone Hemisuccinate LifeFactor	LS-1039	0.5 mL	100 ng/mL	-20°C
rh EGF LifeFactor	LS-1046	1 mL	10 ng/mL	-20°C
Extract P™ LifeFactor	LS-1094	4 mL	0.8%	-20°C
Apo-Transferrin LifeFactor	LS-1095	1 mL	10 µg/mL	-20°C
rh Insulin LifeFactor	LS-1096	1 mL	10 µg/mL	-20°C
Antimicrobial Supplement: Gentamicin and Amphotericin B (Provided with purchase of LL-0068)	LS-1104	0.5 mL	Gentamicin 30 µg/mL Amphotericin B 15 ng/mL	-20°C
Optional Supplements	Part No.	Volume	Concentrations of Supplement	Storage
Phenol Red Supplement	LS-1009	1 mL	33 mM	RT



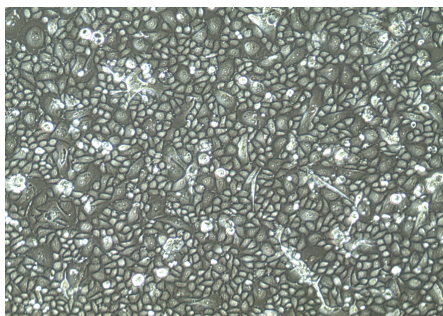
Call Lifeline Technical Service and Sales at **877.845.7787**
Or visit **lifelinecelltech.com** for more information
Lifeline Cell Technology | 8415 Progress Drive, Suite T | Frederick, MD 21701
©2024 Lifeline Cell Technology, an International Stem Cell Company | All Rights Reserved

Quality Testing for Guaranteed Consistency and Reproducible Results

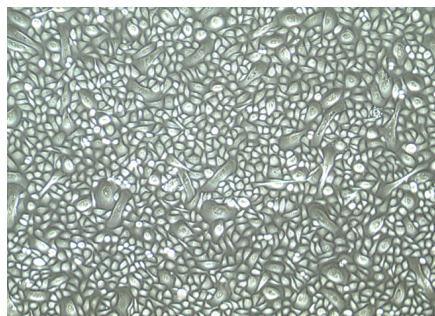
Lifeline Cell Technology manufactures products using the highest quality raw materials and incorporates ISO style quality assurance in every production run. Exacting standards and production procedures ensure lot-to-lot consistency. Every production lot of ReproLife™ Medium is extensively tested using Human Female Reproductive Epithelial Cells. ReproLife Medium and Gentamicin-Amphotericin B (LS-1104) are cell culture tested separately.

- | | | | |
|---------------------|---|--------------|-----------------|
| • Sterility Testing | Negative for bacteria and fungal growth | • Osmolality | 315 +/- 10 mOsm |
| • pH | 7.5 +/- 0.2 | • Endotoxin | < 0.5 EU/mL |
| • Cell Testing | Rate of proliferation and morphology | | |

ReproLife Medium grows Endometrial (Uterine) Epithelial Cells (HEuEC) through at least 5 population doublings, while maintaining excellent cell morphology. ReproLife Medium grows Vaginal Epithelial Cells (HVEC) through at least 10 population doublings, while maintaining excellent cell morphology.



HEuEC, passage 4, 7 days after inoculation with 6,150 cells/cm² (100X).



HVEC, passage 4, 5 days after inoculation with 7,950 cells/cm² (100X).

The Lifeline® Guarantee

Lifeline's rigorous quality control ensures sterility and performance to standardized testing criteria. Upon request, Lifeline will provide lot-specific QC test results, material safety data sheets and certificates of analysis. See complete guarantee/warranty statement at lifelinecelltech.com or contact your Lifeline representative for more information.



Call Lifeline Technical Service and Sales at **877.845.7787**

Or visit **lifelinecelltech.com** for more information

Lifeline Cell Technology | 8415 Progress Drive, Suite T | Frederick, MD 21701

©2024 Lifeline Cell Technology, an International Stem Cell Company | All Rights Reserved