

Specification Sheet

StemLife™ MSC Cell Culture Medium

LL-0034

LM-0011

LS-1060



This product is for Research Use Only.
This product is not approved for human or
veterinary use or for use in in vitro
diagnostics or clinical procedures.



LIFELINE
CELL TECHNOLOGY

Better Solutions for
Breakthrough Results

StemLife MSC Cell Culture Medium

StemLife MSC Medium is optimized for the culture of Human Mesenchymal Stem Cells isolated from Wharton's Jelly or Adipose tissues. StemLife MSC supports the undifferentiated expansion of HMSC.

StemLife Basal Medium contains no antimicrobials and no phenol red. Lifeline offers antimicrobials and phenol red; however, they are not required for eukaryotic cell proliferation.

StemLife MSC Culture Medium Components

StemLife MSC is offered in a kit format composed of basal medium and associated supplements and growth factors called "LifeFactors™." This kit allows you to prepare fresh medium in your laboratory, extending shelf life and enhancing performance. StemLife Basal Medium is provided in a light-protected 500 mL bottle. The remaining LifeFactors (growth factors and supplements) are packaged in a convenient gas-impermeable pouch for easy storage.

Product	Part No.	Volume	Final Concentrations in Supplemented Medium	Storage
StemLife MSC Medium Complete Kit, (StemLife Basal Medium, StemLife MSC LifeFactors Kit)	LL-0034			2-8°C when prepared
StemLife Basal Medium	LM-0011	485 mL		2-8°C
StemLife MSC LifeFactors Kit	LS-1060			-20°C
L-Alanyl-L-Glutamine LifeFactor	LS-1053	6 mL	2.4 mM	-20°C
MSC LifeFactor	LS-1058	10 mL	proprietary	-20°C
Antimicrobial Supplement: Gentamicin and Amphotericin B (Provided with purchase of LL-0034)	LS-1104	0.5 mL	Gentamicin 30 µg/mL Amphotericin B 15 ng/mL	-20°C
Optional Supplements	Part No.	Volume	Concentrations of Supplement	Storage
Phenol Red Supplement	LS-1009	1 mL	33 mM	RT
Other Recommended Products	Part No.	Unit	Storage	
Human Mesenchymal Stem Cells-Wharton's Jelly (HMSC-WJ)	FC-0020	500,000 cells/mL	-150°C	
Human Mesenchymal Stem Cells-Adipose (HMSC-Ad)	FC-0034	1,000,000 cells/mL	-150°C	



Call Lifeline Technical Service and Sales at **877.845.7787**

Or visit lifelinecelltech.com for more information

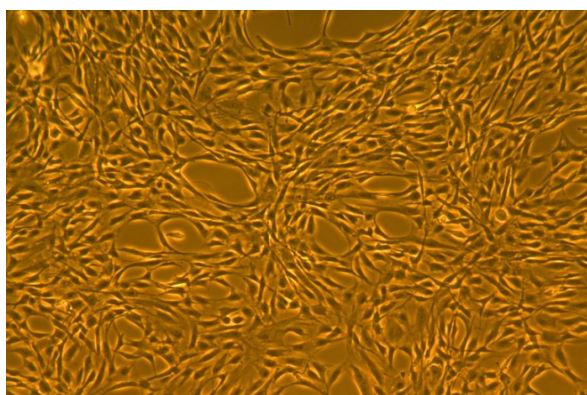
Lifeline Cell Technology | 8415 Progress Drive, Suite T | Frederick, MD 21701

©2024 Lifeline Cell Technology, an International Stem Cell Company | All Rights Reserved

Quality Testing for Guaranteed Consistency and Reproducible Results

Lifeline Cell Technology manufactures products using the highest quality raw materials and incorporates ISO style quality assurance in every production run. Exacting standards and production procedures ensure lot-to-lot consistency. Every production lot of StemLife MSC Medium is extensively tested using Mesenchymal Stem Cells. StemLife MSC Medium and Gentamicin-Amphotericin B (LS-1104) are cell culture tested separately.

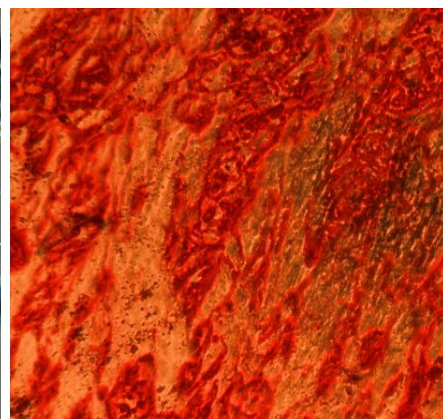
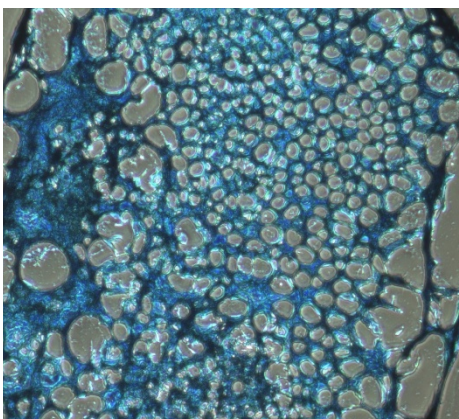
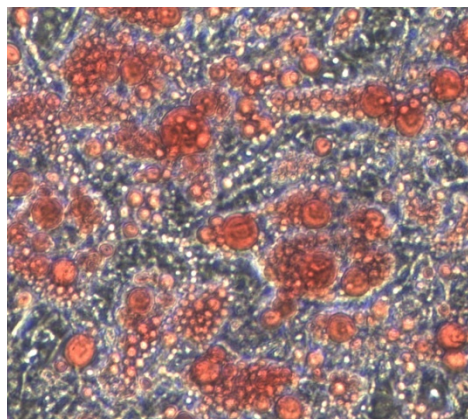
- | | | | |
|---------------------|--|--------------|-----------------|
| • Sterility Testing | Negative for bacterial and fungal growth | • Osmolality | 270 +/- 10 mOsm |
| • pH | 7.8 +/- 0.3 | • Endotoxin | < 0.5 EU/mL |
| • Cell Testing | Rate of proliferation and morphology | | |



StemLife™ MSC Medium grows Human Mesenchymal Stem Cells (HMSC-WJ or HMSC-Ad) while maintaining an undifferentiated state. Mesenchymal Stem Cells can then be differentiated as seen below.

Shown left: Lifeline's HMSC-Ad, passage 4, 4 days after inoculation with approximately 4,500 cells/cm² (100X).

Shown below (from left to right): Lifeline's HMSC-Ad differentiated to adipocytes (stained with Oil Red O, 100X); chondrocytes (sliced and stained with Alcian blue, 400X); and osteoblasts (stained with Alizarin Red S, 100X).



The Lifeline® Guarantee

Lifeline's rigorous quality control ensures sterility and performance to standardized testing criteria. Upon request, Lifeline will provide lot-specific QC test results, material safety data sheets and certificates of analysis. See complete guarantee/warranty statement at lifelinecelltech.com or contact your Lifeline representative for more information.



Call Lifeline Technical Service and Sales at **877.845.7787**

Or visit **lifelinecelltech.com** for more information

Lifeline Cell Technology | 8415 Progress Drive, Suite T | Frederick, MD 21701

©2024 Lifeline Cell Technology, an International Stem Cell Company | All Rights Reserved