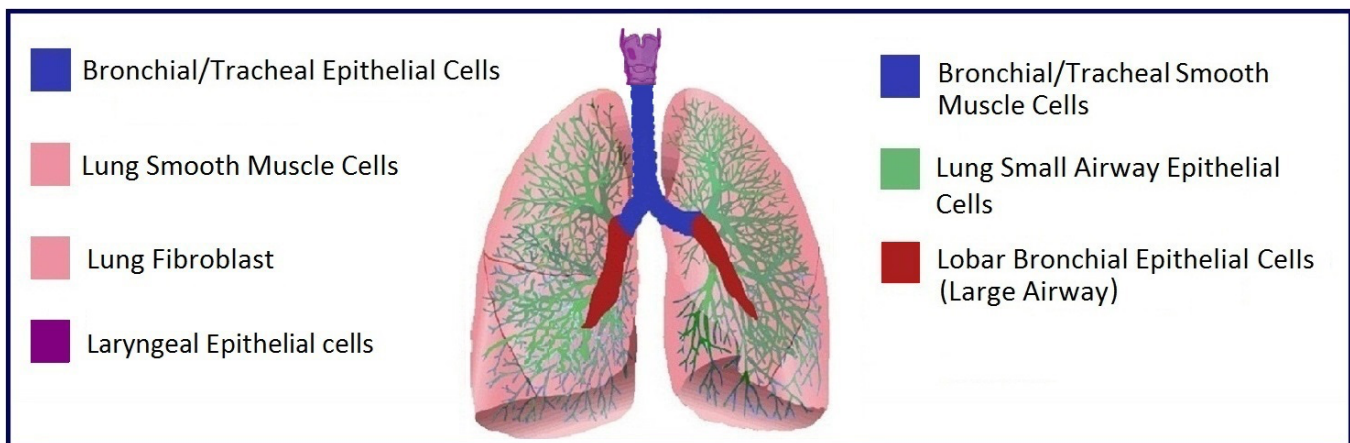


Human Lung Cell Systems and Media

- **Bronchial/Tracheal Epithelial Cells**
- **Bronchial/Tracheal Smooth Muscle Cells**
- **Lobar Bronchial Epithelial Cells (Large Airway)**
- **Lung Fibroblast Cells**

- **Small Airway Epithelial Cells**
- **Lung Smooth Muscle Cells**
- **Small Airway Epithelial Cells-Asthma + Chronic Obstructive Pulmonary Disease**



Lifeline's Human Lung Cells, when grown in Lifeline brand culture medium, provide ideal culture models for the study of pulmonary diseases such as Asthma, COPD, Cystic Fibrosis, Lung Cancer, as well as the effects of smoking on respiratory health.

Lifeline's Lung Cells are cryopreserved at the end of primary or secondary culture to ensure the highest viability and plating efficiency. Our Bronchial/Tracheal Epithelial, Lobar Bronchial Epithelial, Small Airway Epithelial, Laryngeal Epithelial, and Small Airway Epithelial-A+CPD Cells are cultured in BronchialLife™ Medium. Our Bronchial/Tracheal Smooth Muscle, and Lung Smooth Muscle Cells are cultured in VascuLife® SMC Medium. Our Lung Fibroblasts are cultured in FibroLife™ S2 Medium. Our Lung Microvascular Endothelial Cells are cultured in VascuLife® VEGF-Mv Medium. Lifeline's cells need not be exposed to Retinoic Acid or Phenol Red when cultured in Lifeline culture media.

HUMAN LUNG CELLS ARE TESTED FOR:

• Cell Count	500,000 cryopreserved cells per vial
• Proliferation and Morphology	Normal cell appearance for 15 population doublings
• Cell Viability	≥ 70% viability when thawed from cryopreservation
• Sterility Testing	Negative for mycoplasma, Negative for bacterial and fungal growth
• Virus Testing	Negative for HIV-1, HIV-2, HBV, and HCV by PCR
• Specific Staining (Smooth Muscle Cells)	Negative for von Willebrand Factor Positive for Smooth Muscle α -Actin after differentiation



Call Lifeline Technical Service and Sales at **877.845.7787**

Or visit **lifelinecelltech.com** for more information

Lifeline Cell Technology | 8415 Progress Drive, Suite T | Frederick, MD 21701

©2024 Lifeline Cell Technology, an International Stem Cell Company | All Rights Reserved



Quality Testing for Guaranteed Consistency and Reproducible Results

Lifeline Cell Technology manufactures products using the highest quality raw materials and incorporates extensive quality assurance in every production run. Exacting standards and production procedures ensure consistent performance.

The Lifeline® Guarantee

Lifeline's rigorous quality control ensures sterility and performance to standardized testing criteria. All donated tissues have been obtained under proper informed consent and adheres to the Declaration of Helsinki, The Human Tissue Act (UK), CFR Title 21, and HIPAA Regulations relative to obtaining and handling human tissue for Research Use. Upon request, Lifeline will provide lot specific QC test results, material safety data sheets, and certificates of analysis. See complete guarantee/warranty statement at lifelinecelltech.com or contact your Lifeline representative for more information.

Safety Statement

This product is For Research Use Only. This product is not approved for human or veterinary use, or for use in *in vitro* diagnostic or clinical procedures.

Lifeline recommends storing cryopreserved vials in liquid nitrogen vapor phase. Handle cryopreserved vials with caution. Always wear eye protection and gloves when working with cell cultures. Aseptically vent any nitrogen from cryopreserved vials in a biosafety cabinet prior to thawing the vials in a water bath. If vials must be stored in liquid phase, the vials should be transferred to vapor phase storage or -80°C for up to 24 hours prior to being thawed.

PRODUCT INFORMATION:	
Part #	Description
FC-0016	Normal Human Small Airway Epithelial Cells, Primary – 500,000 cells per vial
FC-0035	Normal Human Bronchial/Tracheal Epithelial Cells, Primary – 500,000 cells per vial
FC-0054	Normal Human Lobar Bronchial Epithelial Cells (Large Airway), Primary – 500,000 cells per vial
FC-0067	Diseased Human Small Airway Epithelial Cells-Asthma + Chronic Obstructive Pulmonary Disease, Primary – 500,000 cells per vial
LL-0023	BronchiaLife™ Medium Complete Kit - <i>For the culturing of BTEC, SAEC, LBEC, LEC, and BTEC-CF</i>
FC-0046	Normal Human Lung Smooth Muscle Cells, Secondary – 500,000 cells per vial
FC-0059	Normal Human Bronchial/Tracheal Smooth Muscle Cells, Secondary – 500,000 cells per vial
LL-0014	VascuLife® SMC Medium Complete Kit - <i>For the culturing of BTSMC, and LSMC</i>
FC-0049	Normal Human Lung Fibroblast Cells, Secondary – 500,000 cells per vial
LL-0001	FibroLife™ Serum-Free Medium Complete Kit - <i>For the culturing of LFC</i>
LL-0011	FibroLife S2 Medium Complete Kit - <i>For the culturing of LFC</i>
FC-0058	Normal Human Lung Microvascular Endothelial Cells, Quaternary – 500,000 cells per vial
LL-0005	VascuLife® VEGF-Mv Medium Complete Kit - <i>For the culturing of LMVEC</i>
FC-0106	Human Small Airway Epithelial Cells, Secondary, Normal (HSAEC)



Call Lifeline Technical Service and Sales at **877.845.7787**

Or visit lifelinecelltech.com for more information

Lifeline Cell Technology | 8415 Progress Drive, Suite T | Frederick, MD 21701

©2024 Lifeline Cell Technology, an International Stem Cell Company | All Rights Reserved