

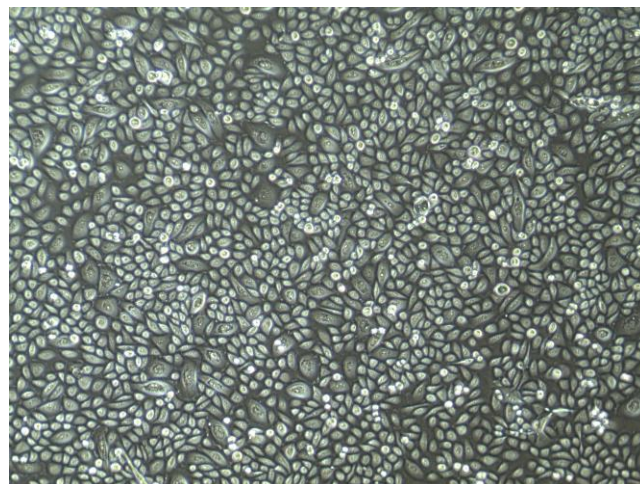
## Normal Human Laryngeal Epithelial Cells (HLEC) FC-0045

### Product Description

Lifeline® Normal Human Laryngeal Epithelial Cells, when grown in Lifeline BronchiaLife™ Medium, provide an ideal serum-free culture model for the study of respiratory infection, asthma, chronic obstructive pulmonary disease, cystic fibrosis, response to inflammation, and the damaging effects of smoking.

Lifeline's HLEC are cultured without retinoic acid and cryopreserved as primary cells to ensure the highest viability and plating efficiency.

All Lifeline HLEC are quality tested in BronchiaLife Medium to ensure proper growth and morphology over a period of at least 15 population doublings. Lifeline Epithelial Cells are not exposed to antimicrobials or phenol red.



*Laryngeal Epithelial Cells, 10x*

Lifeline's HLEC are not exposed to antimicrobials or phenol red when cultured in the respective Lifeline medium. Lifeline offers antimicrobials and phenol red; however, they are not required for eukaryotic cell proliferation. A vial of Gentamicin and Amphotericin B (GA; LS-1104) is provided with the purchase of BronchiaLife Medium Complete Kit (LL-0023) for your convenience. The use of GA is recommended to inhibit potential fungal or bacterial contamination of eukaryotic cell cultures. Phenol Red (LS-1009) may be purchased, but is not required.

### Cell Features:

- HLEC are cryopreserved as primary cells\*.
- Human Airway Epithelial Cells provide an ideal model for the study of respiratory infection, asthma, chronic obstructive pulmonary disease, cystic fibrosis, response to inflammation, and the damaging effects of smoking.
- Lifeline's Human Airway Epithelial Cells are not exposed to retinoic acid during isolation or expansion.
- Lifeline's Human Airway Epithelial Cells are extensively tested for quality and optimal performance.
- Lifeline guarantees performance and quality.

Part #	Description
<a href="#">FC-0045</a>	HLEC, Normal Human Laryngeal Epithelial Cells, primary* - $\geq 500,000$ cells per vial
<a href="#">LL-0023</a>	BronchiaLife Medium Complete Kit (BronchiaLife Basal Medium, BronchiaLife LifeFactors® Kit)
<a href="#">LS-1104</a>	GA Antimicrobial Supplement, 0.5 mL (Gentamicin 30 mg/mL, Amphotericin B 15 µg/mL); provided with purchase of LL-0023

To place an order, please visit [lifelinecelltech.com](http://lifelinecelltech.com) or call us at **877.845.7787**

**Lifeline Cell Technology - 8415 Progress Drive, Suite T - Frederick, MD 21701**

## Normal Human Epithelial Cells are tested for:

- **Cell Count**
  - $\geq 500,000$  cryopreserved cells per vial
- **Proliferation and Morphology**
  - Normal cell appearance for 15 population doublings
- **Cell Viability**
  - Minimum 70% viability when thawed from cryopreservation
- **Sterility**
  - Negative for mycoplasma, bacterial, and fungal growth
- **Virus**
  - Negative for HIV-1, HIV-2, HBV, and HCV by PCR

## Quality Tested for Guaranteed Consistency and Reproducible Results

Lifeline Cell Technology manufactures products using the highest quality raw materials and incorporates extensive quality assurance in every production run. Exacting standards and production procedures ensure consistent performance.

## The Lifeline Guarantee

Lifeline's rigorous quality control ensures sterility and performance to standardized testing criteria. Upon request, Lifeline will provide lot-specific QC test results, material safety data sheets, and certificates of analysis. See complete guarantee/warranty statement at [lifelinecelltech.com](http://lifelinecelltech.com) or contact your Lifeline representative for more information.

All donated tissues have been obtained under proper informed consent and in adherence with the Declaration of Helsinki, The Human Tissue Act (UK), CFR Title 21, and HIPAA Regulations relative to obtaining and handling human tissue for research use.

## Safety Statement

This product is for Research Use Only. This product is not approved for human or veterinary use or for use in in vitro diagnostics or clinical procedures.

Lifeline recommends storing cryopreserved vials in liquid nitrogen vapor phase. Handle cryopreserved vials with caution. Always wear eye protection and gloves when working with cell cultures. Aseptically vent any liquid nitrogen from cryopreserved vials by carefully loosening the vial cap in a biosafety cabinet prior to thawing the vials in a water bath. If vials must be stored in liquid phase, the vials should be transferred to vapor phase storage or  $-80^{\circ}\text{C}$  for up to 24 hours prior to being thawed.

*\*Lifeline Technical Note: There are different and often contradictory terminologies used by cell culture companies to define the passage number of cells. Lifeline's designation of 'primary cells' are cells that have been isolated from tissue, plated onto culture vessels, expanded, harvested, and cryopreserved.*

**Call Lifeline Technical Service and Sales at 877.845.7787**

or visit [lifelinecelltech.com](http://lifelinecelltech.com) for more information

**Lifeline Cell Technology - 8415 Progress Drive, Suite T - Frederick, MD 21701**

©2020 Lifeline Cell Technology. All Rights Reserved