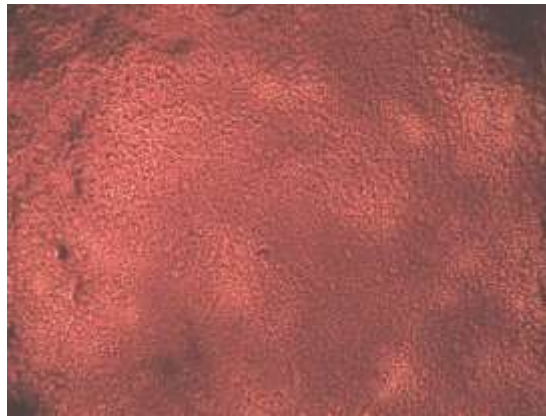


2% Alizarin Red Stain Specifications and Instruction Quick Steps



Lifeline's adipose-derived mesenchymal stem cells differentiated to osteocytes and stained with Alizarin Red (100X).

2% Alizarin Red Stain

Alizarin Red stains for calcium deposits which are indicative of functional osteocytes and is a useful tool when used with Lifeline's mesenchymal stem cells and Lifeline's OsteoLife™ Complete Osteogenesis Medium.

Safety Statement

This product is for Research Use Only and is not approved for human or veterinary use, or for use in *in vitro* diagnostics or clinical procedures. Please dispose of reagents in accordance with local and federal regulations.

The Lifeline Guarantee

Lifeline's rigorous quality control ensures sterility and performance to standardized testing criteria. Upon request, Lifeline will provide lot-specific QC test results, material safety data sheets and certificates of analysis. See complete guarantee/warranty statement at lifelinecelltech.com or contact your Lifeline representative for more information.

Product	Part No.	Volume	Storage
2% Alizarin Red Stain	CM-0058	100 mL	Room temp
Other Recommended Products	Part No.	Unit	Storage
Phosphate Buffered Saline	CM-0001	500 mL	Room temp
Additional Materials Recommended but Not Provided by Lifeline Cell Technology			
<ul style="list-style-type: none"> Absolute Ethanol 		<ul style="list-style-type: none"> Deionized Water (dH₂O) 	

To place an order, please visit lifelinecelltech.com or call customer service at 877.845.7787.

Lifeline Cell Technology • 8415 Progress Drive, Suite T • Frederick, MD 21701

**Quick Steps for Fixation and Staining of Osteocytes for Calcium Deposits
(Cultured in a 6-Well Plate Format)**

1. **Always wash hands before and after working with cell cultures.**
2. **Always wear eye protection and gloves when working with cell cultures.**
3. **When working with cells or medium, always use a certified biological safety cabinet.**
4. Remove medium completely from well(s).
5. Gently, from the side of the well, add 1 mL of Lifeline® PBS (CM-0001) per well.
6. Aspirate PBS.
7. Add 3 mL of absolute ethanol per well and fix for 30 minutes at room temperature.
8. Remove ethanol and allow well(s) to dry completely.
9. Add 1 mL of 2% Alizarin Red Stain Solution (CM-0058) per well and gently tilt side-to-side until solution completely covers well.
10. Incubate for 15 minutes at room temperature.
11. Remove Alizarin Red from the well(s).
12. Using care, rinse well(s) three times with 1 mL dH₂O and allow to dry.
13. Take extreme care when rinsing well(s) or calcium crystals may be dislodged and rinsed away.
14. Staining is complete.

For any question on cell staining, please contact technical service at 877.845.7787. We are here to help.

Other Recommended Products	Part No.	Unit	Components	Storage
Human Mesenchymal Stem Cells-Wharton's Jelly (HMSC-WJ)	FC-0020	0.5 x 10 ⁶ Cells		-150°C
Human Mesenchymal Stem Cells-Adipose (HMSC-Ad)	FC-0034	10 ⁶ Cells		-150°C
StemLife™ MSC Medium Complete Kit	LL-0034	Kit	StemLife Basal Medium StemLife MSC LifeFactors® Kit	2-8°C when prepared
Human Mesenchymal Stem Cells-Bone Marrow (HMSC-BM)	FC-0057	10 ⁶ Cells		-150°C
StemLife MSC-BM Medium Complete Kit	LL-0062	Kit	StemLife Basal Medium StemLife MSC-BM LifeFactors Kit	2-8°C when prepared
Human Pre-Adipocytes, Adult (HMSC-Pre-Adipocyte)	FC-0062	10 ⁶ Cells		-150°C
FibroLife® S2 Medium Complete Kit	LL-0011	Kit	FibroLife Basal Medium FibroLife S2 LifeFactors Kit	2-8°C when prepared
OsteoLife™ Complete Osteogenesis Medium	LM-0023	100 mL		-20°C
TrypKit™	LL-0013	Kit	PBS 0.05% Trypsin/0.02% EDTA Trypsin Neutralizing Solution	RT -20°C -20°C
Optional Supplements	Part No.	Volume	Concentrations of Supplement	Storage
Phenol Red Supplement	LS-1009	1 mL	33 mM	RT
Antimicrobial Supplement: Gentamicin and Amphotericin B (Provided with purchase of LL-0011, LL-0034, or LL-0062)	LS-1104	0.5 mL	Gentamicin 30 mg/mL Amphotericin B 15 µg/mL	-20°C

Call Lifeline's Customer Service at 877.845.7787
or visit lifelinecelltech.com for more information

Lifeline Cell Technology – 8415 Progress Drive, Suite T – Frederick, MD 21701

©2019 Lifeline Cell Technology. All Rights Reserved