

BronchiaLife™ Cell Culture Medium Specification Sheet



BronchiaLife Cell Culture Medium

BronchiaLife is optimized for the serum-free culture of Human Bronchial/Tracheal Epithelial, Small Airway Epithelial, Lobar Bronchial Epithelial, Laryngeal Epithelial, Bronchial/Tracheal Epithelial-CF, and Small Airway Epithelial-A+COPD cells. BronchiaLife supports the growth of these cells over a period of at least 15 population doublings.

BronchiaLife Basal Medium contains no antimicrobials and no phenol red. Lifeline offers antimicrobials and phenol red; however, they are not required for eukaryotic cell proliferation.

BronchiaLife Culture Medium Components

BronchiaLife is offered in a kit format composed of basal medium and associated supplements and growth factors called "LifeFactors®." This kit allows you to prepare fresh medium in your laboratory, extending shelf life and enhancing performance. BronchiaLife Basal Medium is provided in a light-protected 500 mL bottle. The remaining LifeFactors (growth factors and supplements) are packaged in a convenient gas-impermeable pouch for easy storage.

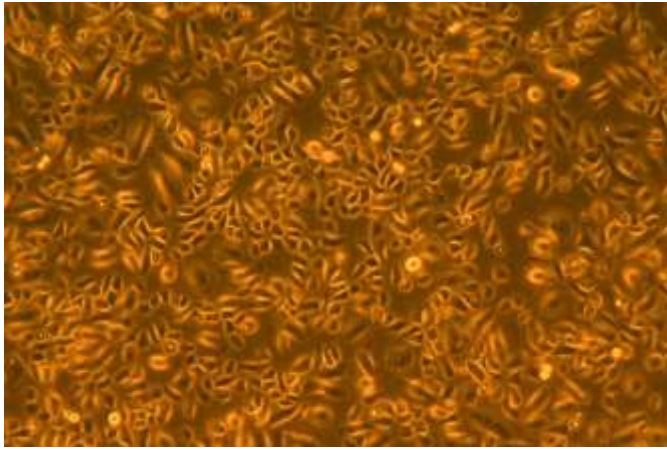
Product	Part No.	Volume	Final Concentrations in Supplemented Medium	Storage
BronchiaLife Medium Complete Kit, (BronchiaLife Basal Medium, BronchiaLife LifeFactors Kit)	LL-0023			2-8°C when prepared
BronchiaLife Basal Medium	LM-0007	485 mL		2-8°C
BronchiaLife LifeFactors Kit	LS-1047			-20°C
HLL Supplement LifeFactor	LS-1001	1.25 mL	HSA-500 µg/mL Linoleic Acid-0.6 µM Lecithin-0.6 µg/mL	-20°C
L-Glutamine LifeFactor	LS-1031	15 mL	6 mM	-20°C
Extract P™ LifeFactor	LS-1037	2 mL	0.4%	-20°C
TM1 LifeFactor	LS-1055	5 mL	Epinephrine – 1 µM Transferrin PS – 5 µg/mL T3 – 10 nM Hydrocortisone – 0.1 µg/mL rh EGF – 5 ng/mL rh Insulin – 5 µg/mL	-20°C
Antimicrobial Supplement: Gentamicin and Amphotericin B (Provided with purchase of LL-0023)	LS-1104	0.5 mL	Gentamicin 30 µg/mL Amphotericin B 15 ng/mL	-20°C
Optional Supplements	Part No.	Volume	Concentrations of Supplement	Storage
Phenol Red Supplement	LS-1009	1 mL	33 mM	RT

Quality Testing for Guaranteed Consistency and Reproducible Results

Lifeline Cell Technology manufactures products using the highest quality raw materials and incorporates ISO style quality assurance in every production run. Exacting standards and production procedures ensure lot-to-lot consistency. Every production lot of BronchiaLife Medium is extensively tested using human airway epithelial cells. BronchiaLife Medium and Gentamicin-Amphotericin B (LS-1104) are cell culture tested separately.

- Sterility Testing Negative for bacterial and fungal growth
- pH 7.5 +/- 0.2
- Cell Testing Rate of proliferation and morphology
- Osmolality 315 +/- 10 mOsm
- Endotoxin < 0.5 EU/mL

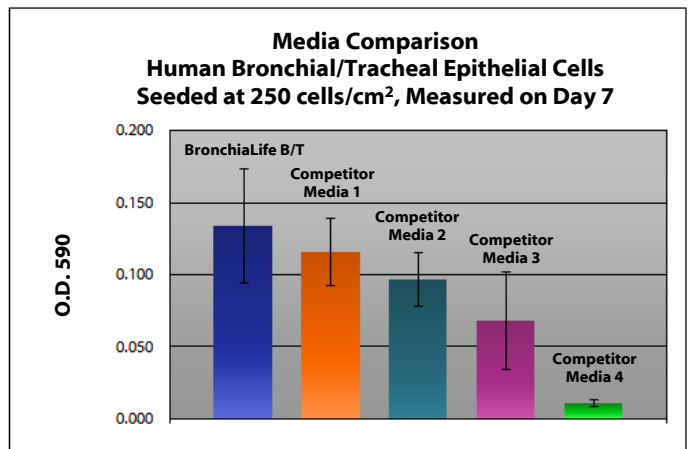
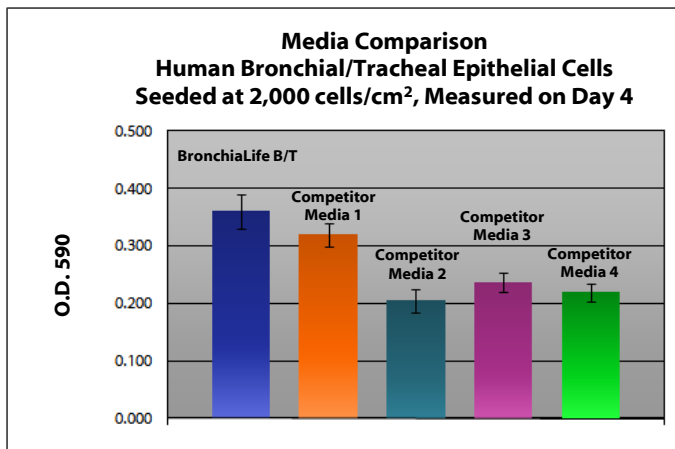
To place an order, please visit lifelinecelltech.com or call technical and customer service at 877.845.7787.



BronchiaLife™ Medium grows Human Bronchial/Tracheal Epithelial, Small Airway Epithelial, Lobar Bronchial Epithelial, Laryngeal Epithelial, Bronchial/Tracheal Epithelial-CF, and Small Airway Epithelial-A+COPD cells through at least 15 population doublings at rates that meet or exceed other commercially available media while maintaining excellent cell morphology. In comparisons with other commercially available media, BronchiaLife shows superior proliferation at different seeding densities.

Shown left: Human Bronchial/Tracheal Epithelial Cells, passage 3, 4 days after inoculation with 5,000 cells/cm² (100X).

Shown below: Proliferation at low seeding density in 24-well plates. Higher O.D. 590 represents a greater number of cells per well and therefore better proliferation.



The Lifeline® Guarantee

Lifeline's rigorous quality control ensures sterility and performance to standardized testing criteria. Upon request, Lifeline will provide lot-specific QC test results, material safety data sheets and certificates of analysis. See complete guarantee/warranty statement at lifelinecelltech.com or contact your Lifeline representative for more information.

Innovative Packaging Features

Lifeline has made significant improvements to traditional medium packaging.

- The specially designed shrink label works as a light barrier to help protect medium from light damage.
- A barrier sleeve helps protect the medium from contaminants found in the water bath.
- Lifeline is an environmentally friendly company. Our cell culture media bottles are recyclable and we ship all products with biodegradable packing material.

Safety Statement

This product is for Research Use Only. This product is not approved for human or veterinary use, or for use in *in vitro* diagnostics or clinical procedures.

Call Lifeline Technical Service and Sales at 877.845.7787
or visit lifelinecelltech.com for more information

Lifeline Cell Technology – 8415 Progress Drive, Suite T – Frederick, MD 21701

©2018 Lifeline Cell Technology. All Rights Reserved