

## ProstaLife™ Prostate Epithelial Cell Culture Medium Specification Sheet



### ProstaLife Cell Culture Medium

ProstaLife is optimized for the culture of Human Prostate Epithelial Cells and Human Seminal Vesicle Epithelial Cells. ProstaLife supports the growth of these cells over a period of at least 15 population doublings.

ProstaLife Basal Medium contains no antimicrobials and no phenol red. Lifeline offers antimicrobials and phenol red; however, they are not required for eukaryotic cell proliferation.

### ProstaLife Cell Culture Medium Components

ProstaLife is offered in a kit format composed of basal medium and associated supplements and growth factors called "LifeFactors®." This kit allows you to prepare fresh medium in your laboratory, extending shelf life and enhancing performance. ProstaLife Basal Medium is provided in a light-protected 500 mL bottle. The remaining LifeFactors (growth factors and supplements) are packaged in a convenient gas-impermeable pouch for easy storage.

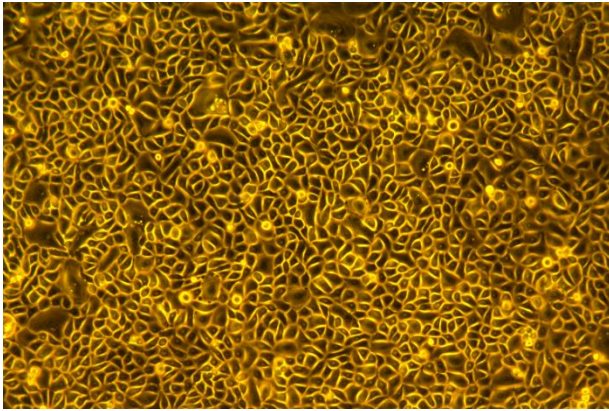
Product	Part No.	Volume	Final Concentrations in Supplemented Medium	Storage
<b>ProstaLife Medium Complete Kit, (ProstaLife Basal Medium, ProstaLife LifeFactors Kit)</b>	<a href="#">LL-0041</a>			2-8°C when prepared
<b>ProstaLife Basal Medium</b>	<a href="#">LM-0017</a>	485 mL		2-8°C
<b>ProstaLife LifeFactors Kit</b>	<a href="#">LS-1072</a>			-20°C
rh Insulin LifeFactor	<a href="#">LS-1004</a>	0.5 mL	5 µg/mL	-20°C
L-Glutamine LifeFactor	<a href="#">LS-1031</a>	15 mL	6 mM	-20°C
Epinephrine LifeFactor	<a href="#">LS-1032</a>	0.5 mL	1 µM	-20°C
Apo-Transferrin LifeFactor	<a href="#">LS-1033</a>	0.5 mL	5 µg/mL	-20°C
rh TGF-α LifeFactor	<a href="#">LS-1034</a>	0.5 mL	0.5 ng/mL	-20°C
Extract P™ LifeFactor	<a href="#">LS-1037</a>	2 mL	0.4%	-20°C
Hydrocortisone Hemisuccinate LifeFactor	<a href="#">LS-1039</a>	0.5 mL	100 ng/mL	-20°C
Antimicrobial Supplement: Gentamicin and Amphotericin B (Provided with purchase of LL-0041)	<a href="#">LS-1104</a>	0.5 mL	Gentamicin 30 µg/mL Amphotericin B 15 ng/mL	-20°C
<b>Optional Supplements</b>	<b>Part No.</b>	<b>Volume</b>	<b>Concentrations of Supplement</b>	<b>Storage</b>
Phenol Red Supplement	<a href="#">LS-1009</a>	1 mL	33 mM	RT

### Quality Testing for Guaranteed Consistency and Reproducible Results

Lifeline Cell Technology manufactures products using the highest quality raw materials and incorporates ISO style quality assurance in every production run. Exacting standards and production procedures ensure lot-to-lot consistency. Every production lot of ProstaLife Medium is extensively tested using prostate epithelial cells. ProstaLife Medium and Gentamicin-Amphotericin B ([LS-1104](#)) are cell culture tested separately.

- Sterility Testing Negative for bacterial and fungal growth
- pH 7.5 +/- 0.2
- Cell Testing Rate of proliferation and morphology
- Osmolality 315 +/- 10 mOsm
- Endotoxin < 0.5 EU/mL

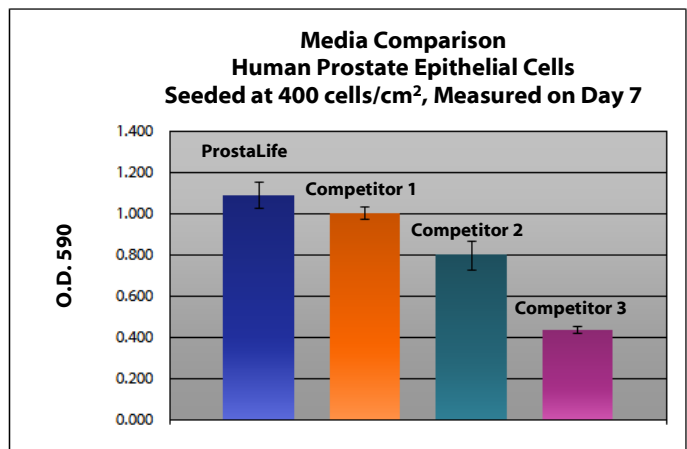
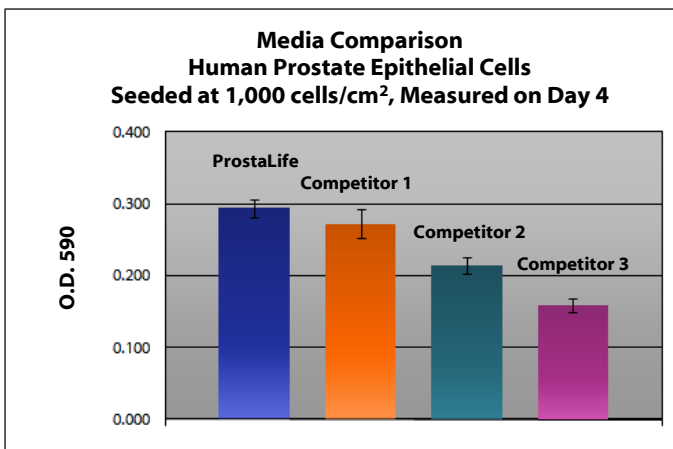
To place an order, please visit [lifelinecelltech.com](http://lifelinecelltech.com) or call technical and customer service at 877.845.7787.



ProstaLife™ Medium grows Human Prostate Epithelial Cells and Human Seminal Vesicle Epithelial Cells through at least 15 population doublings at rates that meet or exceed other commercially available media while maintaining excellent cell morphology. In comparisons with other commercially available media, ProstaLife shows superior proliferation at different seeding densities.

Shown left: Human Prostate Epithelial Cells, passage 3, 5 days after inoculation with 2,500 cells/cm<sup>2</sup> (100X).

Shown below: Human Prostate Epithelial Cells inoculated at the stated density in 24-well plates and stained with crystal violet. Higher O.D. 590 represents a greater number of cells per well and therefore better proliferation.



### The Lifeline® Guarantee

Lifeline's rigorous quality control ensures sterility and performance to standardized testing criteria. Upon request, Lifeline will provide lot-specific QC test results, material safety data sheets and certificates of analysis. See complete guarantee/warranty statement at [lifelinecelltech.com](http://lifelinecelltech.com) or contact your Lifeline representative for more information.

### Innovative Packaging Features

Lifeline has made significant improvements to traditional medium packaging.

- The specially designed shrink label works as a light barrier to help protect medium from light damage.
- A barrier sleeve helps protect the medium from contaminants found in the water bath.
- Lifeline is an environmentally friendly company. Our cell culture media bottles are recyclable and we ship all products with biodegradable packing material.

### Safety Statement

This product is for Research Use Only. This product is not approved for human or veterinary use, or for use in *in vitro* diagnostics or clinical procedures.

**Call Lifeline Technical Service and Sales at 877.845.7787**  
or visit [lifelinecelltech.com](http://lifelinecelltech.com) for more information

**Lifeline Cell Technology – 8415 Progress Drive, Suite T – Frederick, MD 21701**

©2017 Lifeline Cell Technology. All Rights Reserved