

ReproLife™ CX Cervical Epithelial Cell Culture Medium Specification Sheet



ReproLife CX Cell Culture Medium

ReproLife CX is a new medium optimized for the culture of Normal Human Cervical Epithelial Cells (HCxEC). ReproLife CX supports the growth of these cells over a period of at least 5 population doublings.

ReproLife CX Basal Medium contains no antimicrobials and no phenol red. Lifeline offers antimicrobials and phenol red; however, they are not required for eukaryotic cell proliferation.

ReproLife CX Cell Culture Medium Components

ReproLife CX is offered in a kit format composed of basal medium and associated supplements and growth factors called "LifeFactors®." This kit allows preparation of fresh medium in your laboratory, extending shelf life and enhancing performance. ReproLife CX Basal Medium is provided in a light-protected 500 mL bottle. The remaining LifeFactors (growth factors and supplements) are packaged in a convenient gas-impermeable pouch for easy storage.

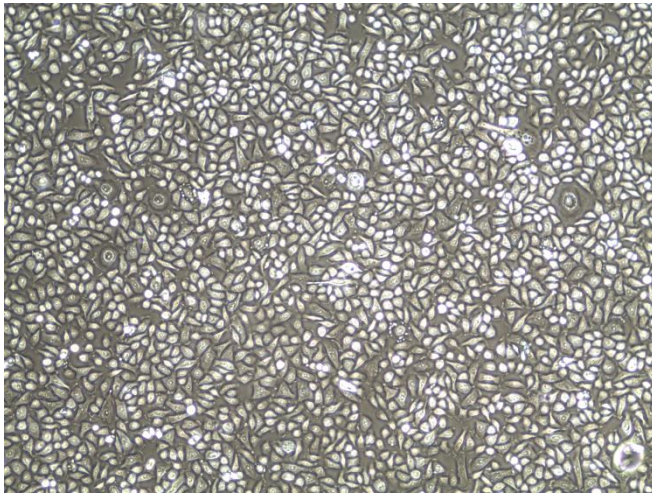
Product	Part No.	Volume	Final Concentrations in Supplemented Medium	Storage
ReproLife CX Medium Complete Kit, (ReproLife CX Basal Medium, ReproLife CX LifeFactors Kit)	LL-0072			2-8°C when prepared
ReproLife CX Basal Medium	LM-0055	485 mL		2-8°C
ReproLife CX LifeFactors Kit	LS-1116			-20°C
HLL Supplement LifeFactor	LS-1001	1.25 mL	HSA-500 µg/mL Linoleic Acid-0.6 µM Lecithin-0.6 µg/mL	-20°C
rh Insulin LifeFactor	LS-1004	0.5 mL	5 µg/mL	-20°C
rh EGF LifeFactor	LS-1015	0.5 mL	5 ng/mL	-20°C
L-Glutamine LifeFactor	LS-1031	15 mL	6 mM	-20°C
Epinephrine LifeFactor	LS-1032	0.5 mL	1 µM	-20°C
Extract P™ LifeFactor	LS-1037	2 mL	0.4%	-20°C
Hydrocortisone Hemisuccinate LifeFactor	LS-1039	0.5 mL	100 ng/mL	-20°C
Triiodothyronine LifeFactor	LS-1044	0.5 mL	10 nM	-20°C
PS Transferrin LifeFactor	LS-1052	0.5 mL	5 µg/mL	-20°C
Antimicrobial Supplement: Gentamicin and Amphotericin B (Provided with purchase of LL-0072)	LS-1104	0.5 mL	Gentamicin 30 µg/mL Amphotericin B 15 ng/mL	-20°C
Optional Supplements	Part No.	Volume	Concentrations of Supplement	Storage
Phenol Red Supplement	LS-1009	1 mL	33 mM	RT

Quality Testing for Guaranteed Consistency and Reproducible Results

Lifeline Cell Technology manufactures products using the highest quality raw materials and incorporates ISO style quality assurance in every production run. Exacting standards and production procedures ensure lot-to-lot consistency. Every production lot of ReproLife CX Medium is extensively tested using Human Cervical Epithelial Cells. ReproLife CX Medium and Gentamicin-Amphotericin B (LS-1104) are cell culture tested separately.

- Sterility Testing Negative for bacteria and fungal growth
- pH 7.5 +/- 0.2
- Cell Testing Rate of proliferation and morphology
- Osmolality 315 +/- 10 mOsm
- Endotoxin < 0.5 EU/mL

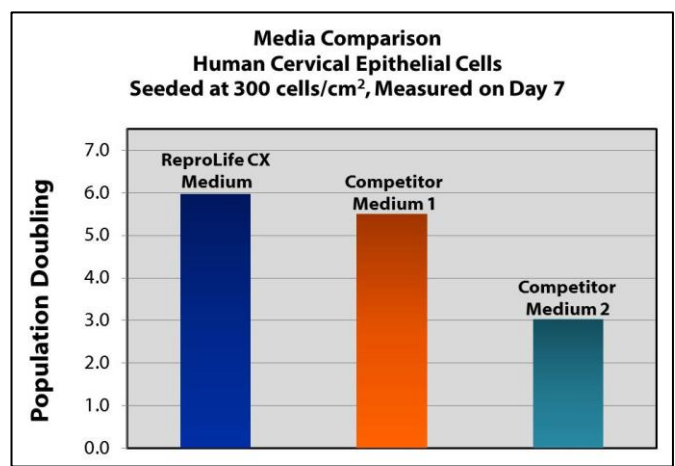
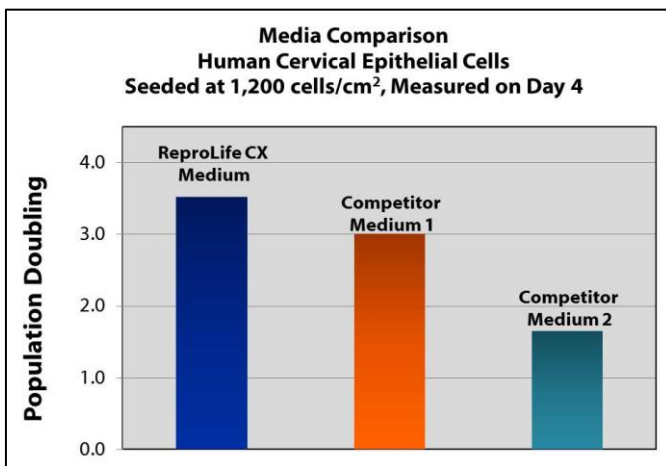
To place an order, please visit lifelinecelltech.com or call technical and customer service at 877.845.7787.



ReproLife™ CX Medium grows Normal Human Cervical Epithelial Cells through at least 5 population doublings, at rates that meet or exceed other commercially available media while maintaining excellent cell morphology. In comparison with other commercially available media, ReproLife CX shows superior proliferation at different seeding densities.

Shown left: Human Cervical Epithelial Cells, passage 4, 5 days after inoculation with 5,000 cells/cm² (100X).

Shown below: Proliferation at low seeding density. Human Cervical Epithelial Cells were inoculated at the stated density and then harvested. Cells were counted and the number of population doublings was calculated.



The Lifeline® Guarantee

Lifeline’s rigorous quality control ensures sterility and performance to standardized testing criteria. Upon request, Lifeline will provide lot-specific QC test results, material safety data sheets and certificates of analysis. See complete guarantee/warranty statement at lifelinecelltech.com or contact your Lifeline representative for more information.

Innovative Packaging Features

Lifeline has made significant improvements to traditional medium packaging.

- The specially designed shrink label works as a light barrier to help protect medium from light damage.
- A barrier sleeve helps protect the medium from contaminants found in the water bath.
- Lifeline is an environmentally friendly company. Our cell culture media bottles are recyclable and we ship all products with biodegradable packing material.

Safety Statement

This product is for Research Use Only. This product is not approved for human or veterinary use, or for use in *in vitro* diagnostics or clinical procedures.

Call Lifeline Technical Service and Sales at 877.845.7787
or visit lifelinecelltech.com for more information

Lifeline Cell Technology – 8415 Progress Drive, Suite T – Frederick, MD 21701

©2017 Lifeline Cell Technology. All Rights Reserved