

StemLife™ Sk Cell Culture Medium Specification Sheet



StemLife Sk Cell Culture Medium

StemLife Sk is a new medium optimized for the culture of human skeletal muscle satellite cells (HskMC). StemLife Sk medium supports the undifferentiated expansion of skeletal muscle satellite cells.

StemLife Sk medium contains no antimicrobials and no phenol red. Lifeline offers antimicrobials and phenol red; however, they are not required for eukaryotic cell proliferation.

StemLife Sk Features and Benefits

StemLife Sk is offered in a kit format composed of basal medium and associated supplements and growth factors called "LifeFactors®." This kit allows you to prepare fresh medium in your laboratory, extending shelf life and enhancing performance.

StemLife Basal Medium is provided in a light-protected 500 mL bottle. The remaining LifeFactors (growth factors and supplements) are packaged in a convenient gas-impermeable pouch for easy storage.

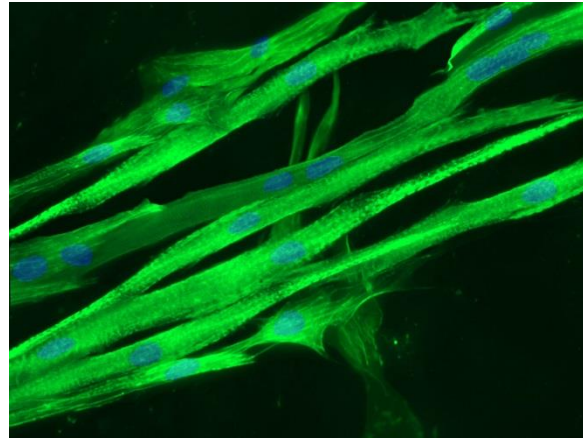
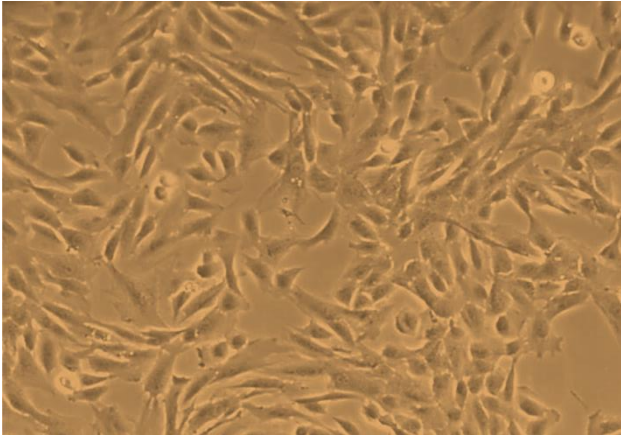
Product	Part No.	Volume	Final Concentrations in Supplemented Medium	Storage
StemLife Sk Medium Complete Kit, (StemLife Basal Medium, StemLife Sk LifeFactors Kit)	LL-0069			2-8°C when prepared
StemLife Basal Medium	LM-0011	485 mL		2-8°C
StemLife Sk LifeFactors Kit	LS-1103			-20°C
rh FGF-b LifeFactor	LS-1002	0.5 mL	5 ng/mL	-20°C
L-Glutamine LifeFactor	LS-1013	25 mL	10 mM	-20°C
rh EGF LifeFactor	LS-1015	0.5 mL	5 ng/mL	-20°C
Stem Cell Qualified FBS LifeFactor	LS-1098	20 mL	4%	-20°C
rh Insulin LifeFactor	LS-1099	2.5 mL	25 µg/mL	-20°C
Dexamethasone LifeFactor	LS-1101	1 mL	10 µM	-20°C
Antimicrobial Supplement: Gentamicin and Amphotericin B (Provided with purchase of LL-0069)	LS-1104	0.5 mL	Gentamicin 30 µg/mL Amphotericin B 15 ng/mL	-20°C
Optional Supplements	Part No.	Volume	Concentrations of Supplement	Storage
Phenol Red Supplement	LS-1009	1 mL	33 mM	RT

To place an order, please visit lifelinecelltech.com or call technical and customer service at 877.845.7787.

Quality Testing for Guaranteed Consistency and Reproducible Results

Lifeline Cell Technology manufactures products using the highest quality raw materials and incorporates ISO style quality assurance in every production run. Exacting standards and production procedures ensure lot-to-lot consistency. Every production lot of StemLife™ Sk Medium is extensively tested using skeletal muscle satellite cells. StemLife Sk Medium and Gentamicin-Amphotericin B (LS-1104) are cell culture tested separately.

- | | | | |
|---------------------|--|--------------|-----------------|
| • Sterility Testing | Negative for bacterial and fungal growth | • Osmolality | 270 +/- 10 mOsm |
| • pH | 7.8 +/- 0.3 | • Endotoxin | < 0.5 EU/mL |
| • Cell Testing | Rate of proliferation and morphology | | |



HSMC, 10 days post-differentiation and stained for Sarcomere (a myogenic marker, green) with DAPI (a nuclear counter stain, blue) (400X)

StemLife Sk Medium grows human skeletal muscle satellite cells while maintaining an undifferentiated state. Skeletal muscle satellite cells may be differentiated into myotubules.

The Lifeline® Guarantee

Lifeline's rigorous quality control ensures sterility and performance to standardized testing criteria. Upon request, Lifeline will provide lot-specific QC test results, material safety data sheets and certificates of analysis. See complete guarantee/warranty statement at lifelinecelltech.com or contact your Lifeline representative for more information.

Innovative Packaging Features

Lifeline has made significant improvements to traditional medium packaging.

- The specially designed shrink label works as a light barrier to help protect medium from light damage.
- A barrier sleeve helps protect the medium from contaminants found in the water bath.
- Lifeline is an environmentally friendly company. Our cell culture media bottles are recyclable and we ship all products with biodegradable packing material.

Safety Statement

This product is for Research Use Only. This product is not approved for human or veterinary use, or for use in *in vitro* diagnostics or clinical procedures.

Call Lifeline Technical Service and Sales at 877.845.7787
or visit lifelinecelltech.com for more information

Lifeline Cell Technology – 8415 Progress Drive, Suite T – Frederick, MD 21701

©2017 Lifeline Cell Technology. All Rights Reserved