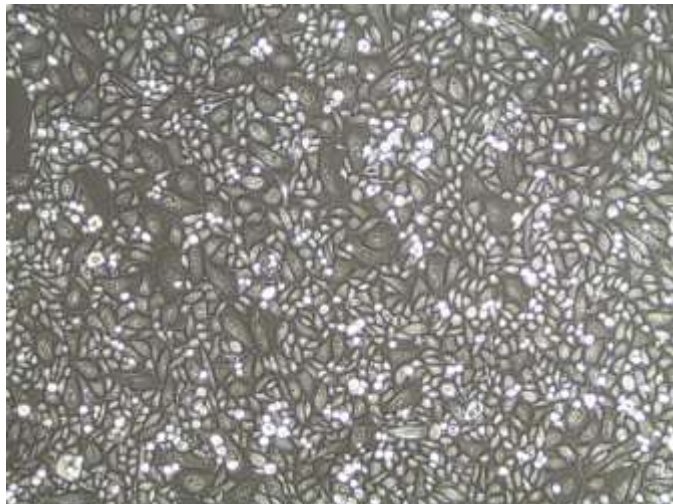


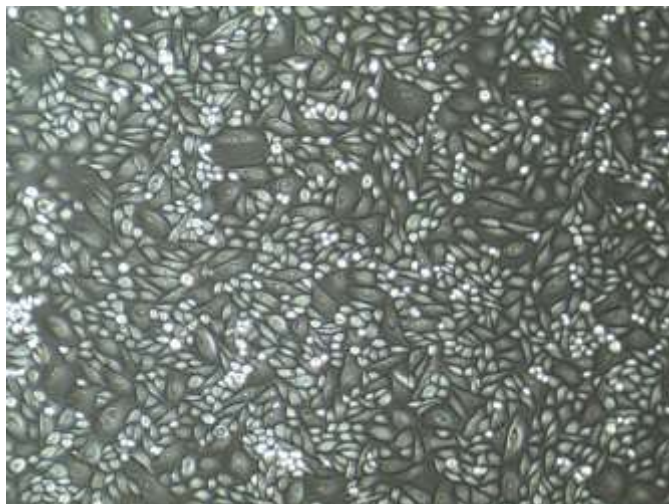
Diseased Human Lung Cell Systems and Media

Bronchial/Tracheal Epithelial Cells - Cystic Fibrosis

Small Airway Epithelial Cells - Asthma + Chronic Obstructive Pulmonary Disease



B/T Epithelial Cells-CF, passage 1 (100X)



SAEC-A+COPD, passage 1 (100X)

Lifeline’s Diseased Human Lung Epithelial Cells, when grown in Lifeline brand culture medium, provide ideal culture models for the study of pulmonary diseases such as Asthma, Chronic Obstructive Pulmonary Disease (COPD), Cystic Fibrosis, as well as the effects of smoking on respiratory health.

Lifeline’s Diseased Human Lung Epithelial Cells are cryopreserved at the end of primary culture to ensure the highest viability and plating efficiency.

Our Bronchial/Tracheal Epithelial Cells - CF, and Small Airway Epithelial Cells - A+COPD are cultured in BronchiaLife™ Medium. Lifeline’s cells need not be exposed to Retinoic Acid or Phenol Red when cultured in Lifeline culture media.

HUMAN DISEASED LUNG CELLS ARE TESTED FOR:

• Cell Count	500,000 cryopreserved cells per vial
• Proliferation and Morphology	Normal cell appearance for 15 population doublings
• Cell Viability	≥ 70% viability when thawed from cryopreservation
• Sterility Testing	Negative for mycoplasma Negative for bacterial and fungal growth
• Virus Testing	Negative for HIV-1, HIV-2, HBV, and HCV by PCR

To place an order, please visit lifelinecelltech.com or call technical and customer service at 877.845.7787.

Quality Testing for Guaranteed Consistency and Reproducible Results

Lifeline Cell Technology manufactures products using the highest quality raw materials and incorporates extensive quality assurance in every production run. Exacting standards and production procedures ensure consistent performance.

The Lifeline® Guarantee

Lifeline's rigorous quality control ensures sterility and performance to standardized testing criteria. All donated tissues have been obtained under proper informed consent and adheres to the Declaration of Helsinki, The Human Tissue Act (UK), CFR Title 21, and HIPAA Regulations relative to obtaining and handling human tissue for Research Use. Upon request, Lifeline will provide lot specific QC test results, material safety data sheets, and certificates of analysis. See complete guarantee/warranty statement at lifelinecelltech.com or contact your Lifeline representative for more information.

Safety Statement

This product is For Research Use Only. This product is not approved for human or veterinary use, or for use in *in vitro* diagnostic or clinical procedures.

Lifeline recommends storing cryopreserved vials in liquid nitrogen vapor phase. Handle cryopreserved vials with caution. Always wear eye protection and gloves when working with cell cultures. Aseptically vent any nitrogen from cryopreserved vials in a biosafety cabinet prior to thawing the vials in a water bath. If vials must be stored in liquid phase, the vials should be transferred to vapor phase storage or -80°C for up to 24 hours prior to being thawed.

PRODUCT INFORMATION:

Part #	Description
FC-0067	Diseased Human Small Airway Epithelial Cells - Asthma + Chronic Obstructive Pulmonary Disease, Primary – 500,000 cells per vial
FC-0103	Diseased Human Bronchial/Tracheal Epithelial Cells - Cystic Fibrosis, Primary – 500,000 cells per vial
LL-0023	BronchiaLife™ Medium Complete Kit - <i>For the culturing of BTEC-CF and SAEC-A+COPD</i>

Call Lifeline Technical Service and Sales at 877.845.7787
or visit lifelinecelltech.com for more information

Lifeline Cell Technology – 8415 Progress Drive, Suite T – Frederick, MD 21701

©2018 Lifeline Cell Technology. All Rights Reserved